

## Summary

<b>Production Name</b>	PSMC5 Rabbit Monoclonal Antibody
<b>Description</b>	Recombinant Rabbit Monoclonal antibody
<b>Host</b>	Rabbit
<b>Application</b>	WB,ICC/IF,IP
<b>Reactivity</b>	Human,Mouse,Rat

## Performance

<b>Conjugation</b>	Unconjugated
<b>Modification</b>	Unmodified
<b>Isotype</b>	IgG
<b>Clonality</b>	Monoclonal Antibody
<b>Form</b>	Liquid
<b>Storage</b>	Store at 4°C short term. Aliquot and store at -20°C long term. Avoid freeze/thaw cycles.
<b>Buffer</b>	50mM Tris-Glycine(pH 7.4), 0.15M NaCl, 40% Glycerol, 0.01% Sodium azide and 0.05% BSA
<b>Purification</b>	Affinity Purified

## Immunogen

<b>Gene Name</b>	PSMC5
<b>Alternative Names</b>	S8; p45; SUG1; SUG-1; TBP10; TRIP1; p45/SUG
<b>Gene ID</b>	5705
<b>SwissProt ID</b>	P62195

## Application

<b>Dilution Ratio</b>	WB: 1/500-1/1000 IF: 1/50-1/200 IP: 1/20
<b>Molecular Weight</b>	Calculated MW: 46 kDa; Observed MW: 46 kDa

## Background

**Product Name: PSMC5 Rabbit Monoclonal Antibody**  
**Catalog #: AMRe02492**

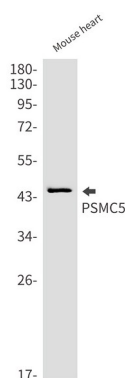


Component of the 26S proteasome, a multiprotein complex involved in the ATP-dependent degradation of ubiquitinated proteins. This complex plays a key role in the maintenance of protein homeostasis by removing misfolded or damaged proteins, which could impair cellular functions, and by removing proteins whose functions are no longer required. Therefore, the proteasome participates in numerous cellular processes, including cell cycle progression, apoptosis, or DNA damage repair. PSMC5 belongs to the heterohexameric ring of AAA (ATPases associated with diverse cellular activities) proteins that unfolds ubiquitinated target proteins that are concurrently translocated into a proteolytic chamber and degraded into peptides.

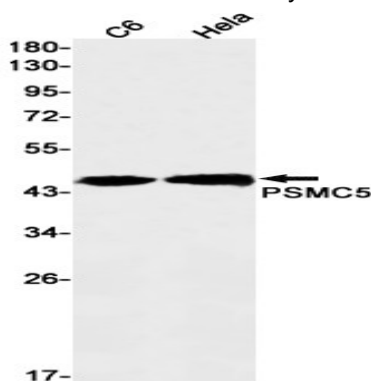
## Research Area

Cell Biology

## Image Data

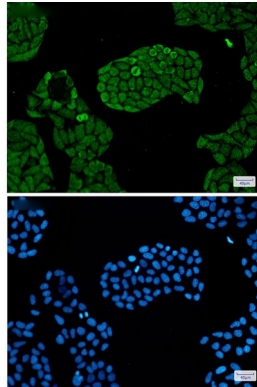


Western blot analysis of PSMC5 in mouse heart lysates using PSMC5 antibody.



Western blot analysis of PSMC5 in C6, HeLa lysates using PSMC5 antibody.

**Product Name: PSMC5 Rabbit Monoclonal Antibody**  
**Catalog #: AMRe02492**



Immunocytochemistry analysis of PSMC5(green) in HeLa using PSMC5 antibody, and DAPI(blue)

**Note**

For research use only.