

## Summary

|                        |  |
|------------------------|--|
| <b>Production Name</b> | PRPF8 Rabbit Monoclonal Antibody       |
| <b>Description</b>     | Recombinant Rabbit Monoclonal antibody |
| <b>Host</b>            | Rabbit                                 |
| <b>Application</b>     | WB,IHC-P                               |
| <b>Reactivity</b>      | Human                                  |

## Performance

|                     |  |
|---------------------|--|
| <b>Conjugation</b>  | Unconjugated   |
| <b>Modification</b> | Unmodified   |
| <b>Isotype</b>      | IgG  |
| <b>Clonality</b>    | Monoclonal Antibody  |
| <b>Form</b>         | Liquid   |
| <b>Storage</b>      | Store at 4°C short term. Aliquot and store at -20°C long term. Avoid freeze/thaw cycles. |
| <b>Buffer</b>       | 50mM Tris-Glycine(pH 7.4), 0.15M NaCl, 40% Glycerol, 0.01% Sodium azide and 0.05% BSA    |
| <b>Purification</b> | Affinity Purified  |

## Immunogen

|                          |   |
|--------------------------|---|
| <b>Gene Name</b>         | PRPF8   |
| <b>Alternative Names</b> | HPRP8; p220; PRP8; PRPC8; Prpf8; RP13; SNRNP220 |
| <b>Gene ID</b>           | 10594   |
| <b>SwissProt ID</b>      | Q6P2Q9  |

## Application

|                         |  |
|-------------------------|--|
| <b>Dilution Ratio</b>   | WB: 1/500-1/1000 IHC: 1/50-1/100             |
| <b>Molecular Weight</b> | Calculated MW: 274 kDa; Observed MW: 274 kDa |

## Background

**Product Name: PRPF8 Rabbit Monoclonal Antibody**  
**Catalog #: AMRe02486**

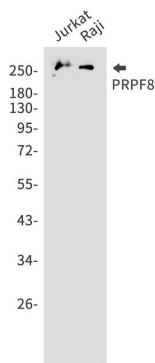


Central component of the spliceosome, which may play a role in aligning the pre-mRNA 5'- and 3'-exons for ligation. Interacts with U5 snRNA, and with pre-mRNA 5'-splice sites in B spliceosomes and 3'-splice sites in C spliceosomes.

## Research Area

Epigenetics and Nuclear Signaling

## Image Data



Western blot analysis of PRPF8 in Jurkat, Raji lysates using PRPF8 antibody.

## Note

For research use only.