

**Product Name: Prothrombin Rabbit Monoclonal Antibody**  
**Catalog #: AMRe02483**

---

## Summary

<b>Production Name</b>	Prothrombin Rabbit Monoclonal Antibody
<b>Description</b>	Recombinant Rabbit Monoclonal antibody
<b>Host</b>	Rabbit
<b>Application</b>	WB,IHC-P
<b>Reactivity</b>	Mouse,Rat

## Performance

<b>Conjugation</b>	Unconjugated
<b>Modification</b>	Unmodified
<b>Isotype</b>	IgG
<b>Clonality</b>	Monoclonal Antibody
<b>Form</b>	Liquid
<b>Storage</b>	Store at 4°C short term. Aliquot and store at -20°C long term. Avoid freeze/thaw cycles.
<b>Buffer</b>	50mM Tris-Glycine(pH 7.4), 0.15M NaCl, 40% Glycerol, 0.01% Sodium azide and 0.05% BSA
<b>Purification</b>	Affinity Purified

## Immunogen

<b>Gene Name</b>	F2
<b>Alternative Names</b>	Cf2; FII; Cf-2
<b>Gene ID</b>	14061.0
<b>SwissProt ID</b>	P19221

## Application

<b>Dilution Ratio</b>	WB: 1/500-1/1000 IHC: 1/50-1/100
<b>Molecular Weight</b>	Calculated MW: 70 kDa; Observed MW: 70 kDa

**Product Name: Prothrombin Rabbit Monoclonal Antibody**  
**Catalog #: AMRe02483**

---

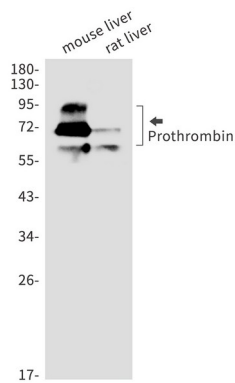
## Background

Thrombin, which cleaves bonds after Arg and Lys, converts fibrinogen to fibrin and activates factors V, VII, VIII, XIII, and, in complex with thrombomodulin, protein C. Functions in blood homeostasis, inflammation and wound healing .

## Research Area

Cardiovascular

## Image Data



Western blot analysis of Prothrombin in mouse liver, rat liver lysates using Prothrombin antibody.

## Note

For research use only.