

Product Name: Proteasome alpha 6 Rabbit Monoclonal Antibody
Catalog #: AMRe02481



Summary

Production Name	Proteasome alpha 6 Rabbit Monoclonal Antibody
Description	Recombinant Rabbit Monoclonal antibody
Host	Rabbit
Application	WB,ICC/IF
Reactivity	Human,Mouse,Rat

Performance

Conjugation	Unconjugated
Modification	Unmodified
Isotype	IgG
Clonality	Monoclonal Antibody
Form	Liquid
Storage	Store at 4°C short term. Aliquot and store at -20°C long term. Avoid freeze/thaw cycles.
Buffer	50mM Tris-Glycine(pH 7.4), 0.15M NaCl, 40% Glycerol, 0.01% Sodium azide and 0.05% BSA
Purification	Affinity Purified

Immunogen

Gene Name	PSMA6
Alternative Names	proteasome subunit alpha 6; IOTA; p27K; PROS27
Gene ID	5687
SwissProt ID	P60900

Application

Dilution Ratio	WB: 1/500-1/1000 IF: 1/50-1/200
Molecular Weight	Calculated MW: 27 kDa; Observed MW: 27 kDa

Product Name: Proteasome alpha 6 Rabbit Monoclonal Antibody
Catalog #: AMRe02481



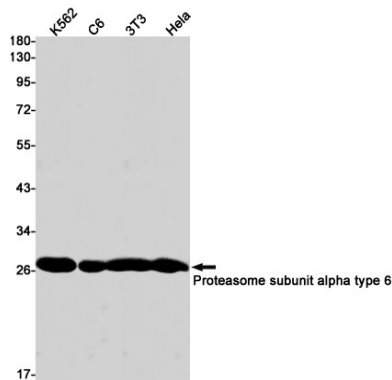
Background

The proteasome is a multicatalytic proteinase complex with a highly ordered ring-shaped 20S core structure. The core structure is composed of 4 rings of 28 non-identical subunits; 2 rings are composed of 7 alpha subunits and 2 rings are composed of 7 beta subunits. Proteasomes are distributed throughout eukaryotic cells at a high concentration and cleave peptides in an ATP/ubiquitin-dependent process in a non-lysosomal pathway. An essential function of a modified proteasome, the immunoproteasome, is the processing of class I MHC peptides. This gene encodes a member of the peptidase T1A family, that is a 20S core alpha subunit. Multiple transcript variants encoding several different isoforms have been found for this gene. A pseudogene has been identified on the Y chromosome. [provided by RefSeq, Aug 2013]

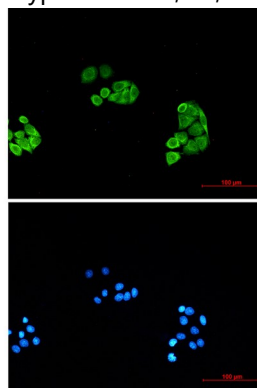
Research Area

Cell Biology

Image Data



Western blot analysis of Proteasome subunit alpha type 6 in K562, C6, 3T3, HeLa lysates using Proteasome alpha 6 antibody.



Immunocytochemistry analysis of Proteasome subunit alpha type 6 (green) in HeLa using Proteasome subunit alpha type 6 antibody, and DAPI (blue)

**Product Name: Proteasome alpha 6 Rabbit Monoclonal
Antibody
Catalog #: AMRe02481**



Note

For research use only.