

---

## Summary

<b>Production Name</b>	PRC1 Rabbit Monoclonal Antibody
<b>Description</b>	Recombinant Rabbit Monoclonal antibody
<b>Host</b>	Rabbit
<b>Application</b>	WB,IHC-P,IP
<b>Reactivity</b>	Human,Rat

## Performance

<b>Conjugation</b>	Unconjugated
<b>Modification</b>	Unmodified
<b>Isotype</b>	IgG
<b>Clonality</b>	Monoclonal Antibody
<b>Form</b>	Liquid
<b>Storage</b>	Store at 4°C short term. Aliquot and store at -20°C long term. Avoid freeze/thaw cycles.
<b>Buffer</b>	50mM Tris-Glycine(pH 7.4), 0.15M NaCl, 40% Glycerol, 0.01% Sodium azide and 0.05% BSA
<b>Purification</b>	Affinity Purified

## Immunogen

<b>Gene Name</b>	PRC1
<b>Alternative Names</b>	Protein regulator of cytokinesis 1
<b>Gene ID</b>	9055
<b>SwissProt ID</b>	O43663

## Application

<b>Dilution Ratio</b>	WB: 1/500-1/1000 IHC: 1/50-1/100 IP: 1/20
<b>Molecular Weight</b>	Calculated MW: 72 kDa; Observed MW: 72 kDa

## Background

---

**Product Name: PRC1 Rabbit Monoclonal Antibody**  
**Catalog #: AMRe02469**

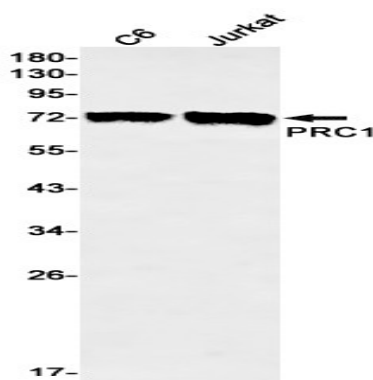


Cross-links antiparrallel microtubules at an average distance of 35 nM. Essential for controlling the spatiotemporal formation of the midzone and successful cytokinesis. Required for KIF14 localization to the central spindle and midbody.

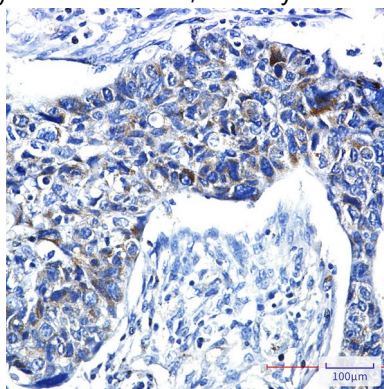
## Research Area

Cell Biology

## Image Data



Western blot analysis of PRC1 in C6, Jurkat lysates using PRC1 antibody.



Immunohistochemistry analysis of paraffin-embedded Human lung cancer using PRC1 antibody. High-pressure and temperature Sodium Citrate pH 6.0 was used for antigen retrieval.

## Note

For research use only.