

**Product Name: PP2A alpha/beta Rabbit Monoclonal Antibody**  
**Catalog #: AMRe02461**



---

## Summary

<b>Production Name</b>	PP2A alpha/beta Rabbit Monoclonal Antibody
<b>Description</b>	Recombinant Rabbit Monoclonal antibody
<b>Host</b>	Rabbit
<b>Application</b>	WB,IHC-F,IHC-P,ICC/IF,IP
<b>Reactivity</b>	Human,Mouse,Rat,Hamster

## Performance

<b>Conjugation</b>	Unconjugated
<b>Modification</b>	Unmodified
<b>Isotype</b>	IgG
<b>Clonality</b>	Monoclonal Antibody
<b>Form</b>	Liquid
<b>Storage</b>	Store at 4°C short term. Aliquot and store at -20°C long term. Avoid freeze/thaw cycles.
<b>Buffer</b>	50mM Tris-Glycine(pH 7.4), 0.15M NaCl, 40% Glycerol, 0.01% Sodium azide and 0.05% BSA
<b>Purification</b>	Affinity Purified

## Immunogen

<b>Gene Name</b>	PPP2CA
<b>Alternative Names</b>	PPP2CA; Serine/threonine-protein phosphatase 2A catalytic subunit alpha isoform; PP2A-alpha; Replication protein C; RP-C
<b>Gene ID</b>	5515
<b>SwissProt ID</b>	P67775

## Application

<b>Dilution Ratio</b>	WB: 1/500-1/1000 IHC: 1/50-1/100 IF: 1/50-1/200 IP: 1/20
<b>Molecular Weight</b>	Calculated MW: 36 kDa; Observed MW: 36 kDa

**Product Name: PP2A alpha/beta Rabbit Monoclonal Antibody**  
**Catalog #: AMRe02461**



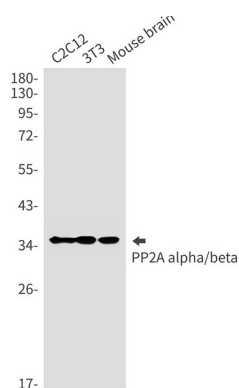
## Background

PP2A is the major phosphatase for microtubule-associated proteins (MAPs). PP2A can modulate the activity of phosphorylase B kinase casein kinase 2, mitogen-stimulated S6 kinase, and MAP-2 kinase. Cooperates with SGOL2 to protect centromeric cohesin from separase-mediated cleavage in oocytes specifically during meiosis I (By similarity). Can dephosphorylate SV40 large T antigen and p53/TP53. Activates RAF1 by dephosphorylating it at 'Ser-259'.

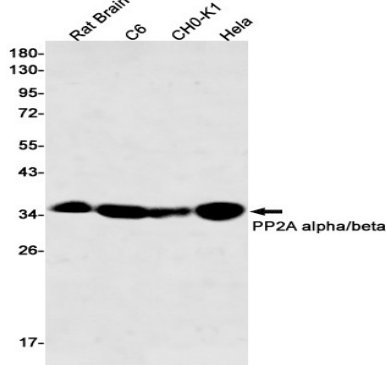
## Research Area

Cell Biology

## Image Data

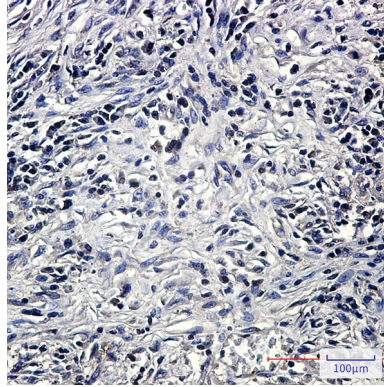


Western blot analysis of PP2A alpha/beta in C2C12, 3T3, mouse brain lysates using PP2A alpha/beta antibody.

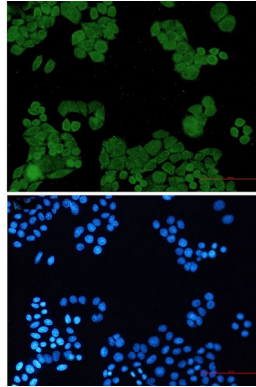


Western blot analysis of PP2A alpha/beta in rat Brain, C6, CHO-K1, HeLa lysates using PP2A alpha/beta antibody.

**Product Name: PP2A alpha/beta Rabbit Monoclonal Antibody**  
**Catalog #: AMRe02461**



Immunohistochemistry analysis of paraffin-embedded Human lung cancer using PP2A alpha/beta antibody. High-pressure and temperature Sodium Citrate pH 6.0 was used for antigen retrieval.



Immunocytochemistry analysis of PP2A alpha/beta (green) in HeLa using PP2A alpha/beta antibody, and DAPI (blue).

## **Note**

For research use only.