

Summary

Production Name	POT1 Rabbit Monoclonal Antibody
Description	Recombinant Rabbit Monoclonal antibody
Host	Rabbit
Application	WB
Reactivity	Human,Mouse,Rat

Performance

Conjugation	Unconjugated
Modification	Unmodified
Isotype	IgG
Clonality	Monoclonal Antibody
Form	Liquid
Storage	Store at 4°C short term. Aliquot and store at -20°C long term. Avoid freeze/thaw cycles.
Buffer	50mM Tris-Glycine(pH 7.4), 0.15M NaCl, 40% Glycerol, 0.01% Sodium azide and 0.05% BSA
Purification	Affinity Purified

Immunogen

Gene Name	POT1
Alternative Names	POT1; Protection of telomeres protein 1; hPot1; POT1-like telomere end-binding protein
Gene ID	25913
SwissProt ID	Q9NUX5

Application

Dilution Ratio	WB: 1/500-1/1000
Molecular Weight	Calculated MW: 71 kDa; Observed MW: 71 kDa

Product Name: POT1 Rabbit Monoclonal Antibody
Catalog #: AMRe02460



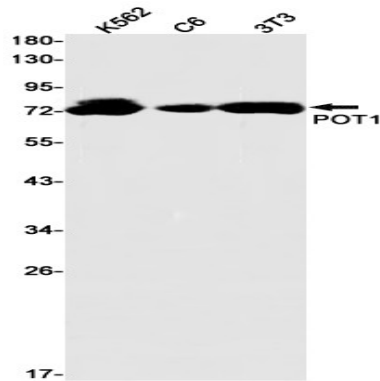
Background

This gene is a member of the telombin family and encodes a nuclear protein involved in telomere maintenance. Specifically, this protein functions as a member of a multi-protein complex that binds to the TTAGGG repeats of telomeres, regulating telomere length and protecting chromosome ends from illegitimate recombination, catastrophic chromosome instability, and abnormal chromosome segregation. Increased transcriptional expression of this gene is associated with stomach carcinogenesis and its progression. Alternatively spliced transcript variants have been described.

Research Area

Epigenetics and Nuclear Signaling

Image Data



Western blot analysis of POT1 in K562, C6, 3T3 lysates using POT1 antibody.

Note

For research use only.