

**Product Name: RNA Polymerases I/II/III Subunit ABC1
Rabbit Monoclonal Antibody
Catalog #: AMRe02457**



Summary

Production Name	RNA Polymerases I/II/III Subunit ABC1 Rabbit Monoclonal Antibody
Description	Recombinant Rabbit Monoclonal antibody
Host	Rabbit
Application	WB,IHC-P
Reactivity	Human,Mouse,Rat

Performance

Conjugation	Unconjugated
Modification	Unmodified
Isotype	IgG
Clonality	Monoclonal Antibody
Form	Liquid
Storage	Store at 4°C short term. Aliquot and store at -20°C long term. Avoid freeze/thaw cycles.
Buffer	50mM Tris-Glycine(pH 7.4), 0.15M NaCl, 40% Glycerol, 0.01% Sodium azide and 0.05% BSA
Purification	Affinity Purified

Immunogen

Gene Name	POLR2E
Alternative Names	RPB5; XAP4; RPABC1; hRPB25; hsRPB5
Gene ID	5434
SwissProt ID	P19388

Application

Dilution Ratio	WB: 1/500-1/1000 IHC: 1/50-1/100
Molecular Weight	Calculated MW: 25 kDa; Observed MW: 25 kDa

**Product Name: RNA Polymerases I/II/III Subunit ABC1
Rabbit Monoclonal Antibody
Catalog #: AMRe02457**



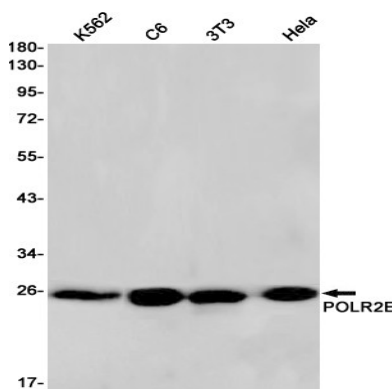
Background

DNA-dependent RNA polymerase catalyzes the transcription of DNA into RNA using the four ribonucleoside triphosphates as substrates. Common component of RNA polymerases I, II and III which synthesize ribosomal RNA precursors, mRNA precursors and many functional non-coding RNAs, and small RNAs, such as 5S rRNA and tRNAs, respectively. Pol II is the central component of the basal RNA polymerase II transcription machinery. Pols are composed of mobile elements that move relative to each other. In Pol II, POLR2E/RPB5 is part of the lower jaw surrounding the central large cleft and thought to grab the incoming DNA template. Seems to be the major component in this process .

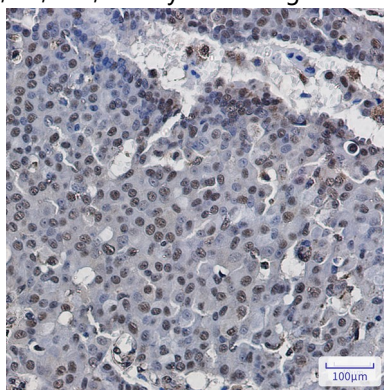
Research Area

Epigenetics and Nuclear Signaling

Image Data



Western blot analysis of POLR2E in K562, C6, 3T3, HeLa lysates using RNA Polymerases I/II/III Subunit ABC1 antibody.



Immunohistochemistry analysis of paraffin-embedded Human breast cancer using POLR2E antibody. High-pressure and temperature Sodium Citrate pH 6.0 was used for antigen retrieval.

Note

For research use only.

**Product Name: RNA Polymerases I/II/III Subunit ABC1
Rabbit Monoclonal Antibody
Catalog #: AMRe02457**

