
Summary

Production Name	PLSCR3 Rabbit Monoclonal Antibody
Description	Recombinant Rabbit Monoclonal antibody
Host	Rabbit
Application	WB
Reactivity	Human,Mouse,Rat

Performance

Conjugation	Unconjugated
Modification	Unmodified
Isotype	IgG
Clonality	Monoclonal Antibody
Form	Liquid
Storage	Store at 4°C short term. Aliquot and store at -20°C long term. Avoid freeze/thaw cycles.
Buffer	50mM Tris-Glycine(pH 7.4), 0.15M NaCl, 40% Glycerol, 0.01% Sodium azide and 0.05% BSA
Purification	Affinity Purified

Immunogen

Gene Name	PLSCR3
Alternative Names	Phospholipid scramblase 3; PL scramblase 3
Gene ID	57048
SwissProt ID	Q9NRY6

Application

Dilution Ratio	WB: 1/500-1/1000
Molecular Weight	Calculated MW: 32 kDa; Observed MW: 32 kDa

Background

Product Name: PLSCR3 Rabbit Monoclonal Antibody
Catalog #: AMRe02453

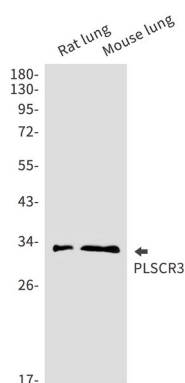


May mediate accelerated ATP-independent bidirectional transbilayer migration of phospholipids upon binding calcium ions that results in a loss of phospholipid asymmetry in the plasma membrane. May play a central role in the initiation of fibrin clot formation, in the activation of mast cells and in the recognition of apoptotic and injured cells by the reticuloendothelial system. Seems to play a role in apoptosis, through translocation of cardiolipin from the inner to the outer mitochondrial membrane which promotes BID recruitment and enhances tBid-induced mitochondrial damages.

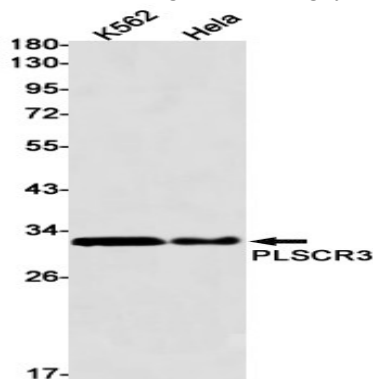
Research Area

Cardiovascular

Image Data



Western blot analysis of PLSCR3 in rat lung, mouse lung lysates using PLSCR3 antibody.



Western blot analysis of PLSCR3 in K562, HeLa lysates using PLSCR3 antibody.

Note

For research use only.