
Summary

Production Name	PKN1 Rabbit Monoclonal Antibody
Description	Recombinant Rabbit Monoclonal antibody
Host	Rabbit
Application	WB
Reactivity	Rat

Performance

Conjugation	Unconjugated
Modification	Unmodified
Isotype	IgG
Clonality	Monoclonal Antibody
Form	Liquid
Storage	Store at 4°C short term. Aliquot and store at -20°C long term. Avoid freeze/thaw cycles.
Buffer	50mM Tris-Glycine(pH 7.4), 0.15M NaCl, 40% Glycerol, 0.01% Sodium azide and 0.05% BSA
Purification	Affinity Purified

Immunogen

Gene Name	PKN1
Alternative Names	DBK; PKN; PAK1; PRK1; PAK-1; PRKCL1; PKN-ALPHA
Gene ID	5585
SwissProt ID	Q16512

Application

Dilution Ratio	WB: 1/500-1/1000
Molecular Weight	Calculated MW: 104 kDa; Observed MW: 120 kDa

Background

Product Name: PKN1 Rabbit Monoclonal Antibody
Catalog #: AMRe02452

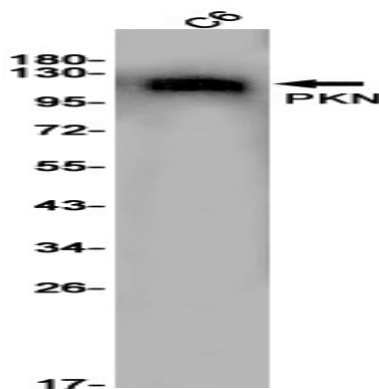


The protein encoded by this gene belongs to the protein kinase C superfamily. This kinase is activated by Rho family of small G proteins and may mediate the Rho-dependent signaling pathway. This kinase can be activated by phospholipids and by limited proteolysis. The 3-phosphoinositide dependent protein kinase-1 (PDK1/PDK1) is reported to phosphorylate this kinase, which may mediate insulin signals to the actin cytoskeleton. The proteolytic activation of this kinase by caspase-3 or related proteases during apoptosis suggests its role in signal transduction related to apoptosis. Alternatively spliced transcript variants encoding distinct isoforms have been observed.

Research Area

Signal Transduction

Image Data



Western blot analysis of PKN in C6 lysates using PKN1 antibody.

Note

For research use only.