
Summary

Production Name	PKC beta 2 Rabbit Monoclonal Antibody
Description	Recombinant Rabbit Monoclonal antibody
Host	Rabbit
Application	WB,ICC/IF,IP
Reactivity	Human,Rat

Performance

Conjugation	Unconjugated
Modification	Unmodified
Isotype	IgG
Clonality	Monoclonal Antibody
Form	Liquid
Storage	Store at 4°C short term. Aliquot and store at -20°C long term. Avoid freeze/thaw cycles.
Buffer	50mM Tris-Glycine(pH 7.4), 0.15M NaCl, 40% Glycerol, 0.01% Sodium azide and 0.05% BSA
Purification	Affinity Purified

Immunogen

Gene Name	PRKCB
Alternative Names	PRKCB; PKCB; PRKCB2; Protein kinase C beta type; PKC-B; PKC-beta
Gene ID	5579
SwissProt ID	P05771

Application

Dilution Ratio	WB: 1/500-1/1000 IF: 1/50-1/200 IP: 1/20
Molecular Weight	Calculated MW: 77 kDa; Observed MW: 77 kDa

Background

Product Name: PKC beta 2 Rabbit Monoclonal Antibody
Catalog #: AMRe02446

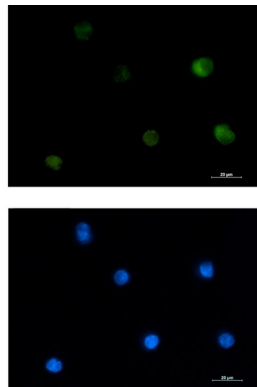


Calcium-activated, phospholipid- and diacylglycerol (DAG)-dependent serine/threonine-protein kinase involved in various cellular processes such as regulation of the B-cell receptor (BCR) signalosome, oxidative stress-induced apoptosis, androgen receptor-dependent transcription regulation, insulin signaling and endothelial cells proliferation. Plays a key role in B-cell activation by regulating BCR-induced NF-kappa-B activation. Mediates the activation of the canonical NF-kappa-B pathway (NFKB1) by direct phosphorylation of CARD11/CARMA1 at 'Ser-559', 'Ser-644' and 'Ser-652'.

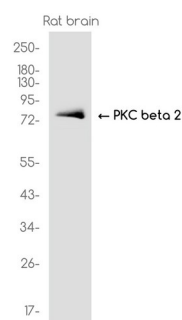
Research Area

Signal Transduction

Image Data

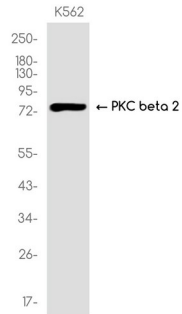


Immunocytochemistry analysis of PKC beta 2 (green) in K562 using PKC beta 2 antibody, and DAPI (blue).



Western blot analysis of PKC beta 2 in rat brain lysates using PKC beta 2 antibody.

Product Name: PKC beta 2 Rabbit Monoclonal Antibody
Catalog #: AMRe02446



Western blot analysis of PKC beta 2 in K562 lysates using PKC beta 2 antibody

Note

For research use only.