
Summary

Production Name	PICK1 Rabbit Monoclonal Antibody
Description	Recombinant Rabbit Monoclonal antibody
Host	Rabbit
Application	WB,IP
Reactivity	Human

Performance

Conjugation	Unconjugated
Modification	Unmodified
Isotype	IgG
Clonality	Monoclonal Antibody
Form	Liquid
Storage	Store at 4°C short term. Aliquot and store at -20°C long term. Avoid freeze/thaw cycles.
Buffer	50mM Tris-Glycine(pH 7.4), 0.15M NaCl, 40% Glycerol, 0.01% Sodium azide and 0.05% BSA
Purification	Affinity Purified

Immunogen

Gene Name	PICK1
Alternative Names	PICK 1; Pick1; PRKCABP
Gene ID	9463
SwissProt ID	Q9NRD5

Application

Dilution Ratio	WB: 1/500-1/1000 IP: 1/20
Molecular Weight	Calculated MW: 47 kDa; Observed MW: 50 kDa

Background

Product Name: PICK1 Rabbit Monoclonal Antibody
Catalog #: AMRe02440

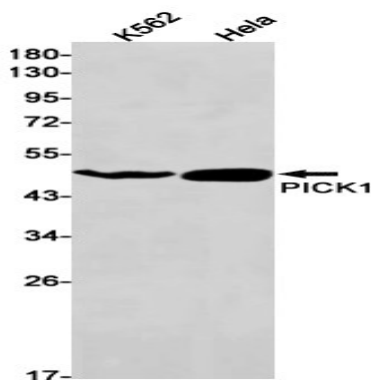


Probable adapter protein that bind to and organize the subcellular localization of a variety of membrane proteins containing some PDZ recognition sequence. Involved in the clustering of various receptors, possibly by acting at the receptor internalization level. Plays a role in synaptic plasticity by regulating the trafficking and internalization of AMPA receptors.

Research Area

Neuroscience

Image Data



Western blot analysis of PICK1 in K562, HeLa lysates using PICK1 antibody.

Note

For research use only.