

**Product Name: Phospho-Phospholamban (Ser16) Rabbit
Monoclonal Antibody
Catalog #: AMRe02436**

Summary

Production Name	Phospho-Phospholamban (Ser16) Rabbit Monoclonal Antibody
Description	Recombinant Rabbit Monoclonal antibody
Host	Rabbit
Application	WB
Reactivity	Human,Mouse

Performance

Conjugation	Unconjugated
Modification	Phosphorylated
Isotype	IgG
Clonality	Monoclonal Antibody
Form	Liquid
Storage	Store at 4°C short term. Aliquot and store at -20°C long term. Avoid freeze/thaw cycles.
Buffer	50mM Tris-Glycine(pH 7.4), 0.15M NaCl, 40% Glycerol, 0.01% Sodium azide and 0.05% BSA
Purification	Affinity Purified

Immunogen

Gene Name	PLN
Alternative Names	PLN; PLB; Cardiac phospholamban; PLB
Gene ID	5350
SwissProt ID	P26678

Application

Dilution Ratio	WB: 1/500-1/1000
Molecular Weight	Calculated MW: 6 kDa; Observed MW: 12,24 kDa

**Product Name: Phospho-Phospholamban (Ser16) Rabbit
Monoclonal Antibody
Catalog #: AMRe02436**

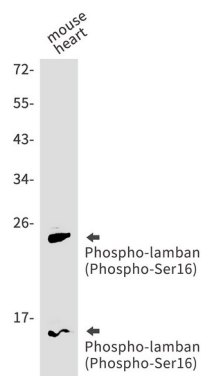
Background

Reversibly inhibits the activity of ATP2A2 in cardiac sarcoplasmic reticulum by decreasing the apparent affinity of the ATPase for Ca²⁺. Modulates the contractility of the heart muscle in response to physiological stimuli via its effects on ATP2A2. Modulates calcium re-uptake during muscle relaxation and plays an important role in calcium homeostasis in the heart muscle. The degree of ATP2A2 inhibition depends on the oligomeric state of PLN. ATP2A2 inhibition is alleviated by PLN phosphorylation.

Research Area

Signal Transduction

Image Data



Western blot analysis of Phospho-lamban (Phospho-Ser16) in mouse heart lysates using Phospho-Phospho-lamban (Ser16) antibody.

Note

For research use only.