

Summary

Production Name	PGM1 Rabbit Monoclonal Antibody
Description	Recombinant Rabbit Monoclonal antibody
Host	Rabbit
Application	WB,ICC/IF,IP
Reactivity	Human,Mouse,Rat

Performance

Conjugation	Unconjugated
Modification	Unmodified
Isotype	IgG
Clonality	Monoclonal Antibody
Form	Liquid
Storage	Store at 4°C short term. Aliquot and store at -20°C long term. Avoid freeze/thaw cycles.
Buffer	50mM Tris-Glycine(pH 7.4), 0.15M NaCl, 40% Glycerol, 0.01% Sodium azide and 0.05% BSA
Purification	Affinity Purified

Immunogen

Gene Name	PGM1
Alternative Names	Phosphoglucomutase-1; PGM 1; Glucose phosphomutase 1
Gene ID	5236
SwissProt ID	P36871

Application

Dilution Ratio	WB: 1/500-1/1000 IF: 1/50-1/200 IP: 1/20
Molecular Weight	Calculated MW: 61 kDa; Observed MW: 61 kDa

Background

Product Name: PGM1 Rabbit Monoclonal Antibody
Catalog #: AMRe02431

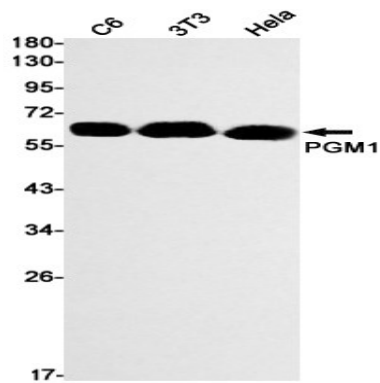


This enzyme participates in both the breakdown and synthesis of glucose.

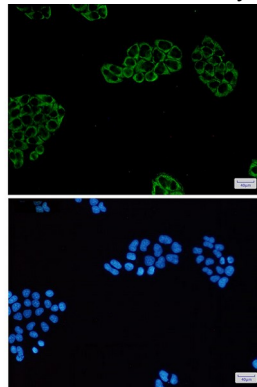
Research Area

Signal Transduction

Image Data



Western blot analysis of PGM1 in C6, 3T3, HeLa lysates using PGM1 antibody.



Immunocytochemistry analysis of PGM1(green) in HeLa using PGM1 antibody, and DAPI(blue)

Note

For research use only.