

Summary

Production Name	PDLIM1 Rabbit Monoclonal Antibody
Description	Recombinant Rabbit Monoclonal antibody
Host	Rabbit
Application	WB,ICC/IF,IP
Reactivity	Human,Mouse,Rat

Performance

Conjugation	Unconjugated
Modification	Unmodified
Isotype	IgG
Clonality	Monoclonal Antibody
Form	Liquid
Storage	Store at 4°C short term. Aliquot and store at -20°C long term. Avoid freeze/thaw cycles.
Buffer	50mM Tris-Glycine(pH 7.4), 0.15M NaCl, 40% Glycerol, 0.01% Sodium azide and 0.05% BSA
Purification	Affinity Purified

Immunogen

Gene Name	PDLIM1
Alternative Names	PDLIM1; CLIM1; CLP36; PDZ and LIM domain protein 1; C-terminal LIM domain protein 1; Elfin; LIM domain protein CLP-36
Gene ID	9124
SwissProt ID	O00151

Application

Dilution Ratio	WB: 1/500-1/1000 IF: 1/50-1/200 IP: 1/20
Molecular Weight	Calculated MW: 36 kDa; Observed MW: 36 kDa

Product Name: PDLIM1 Rabbit Monoclonal Antibody
Catalog #: AMRe02416



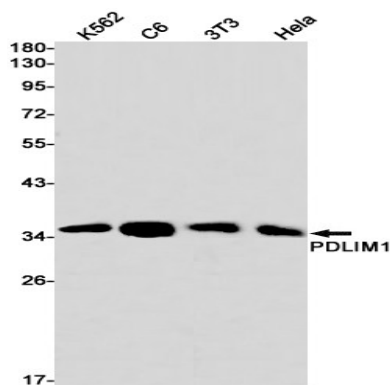
Background

Cytoskeletal protein that may act as an adapter that brings other proteins (like kinases) to the cytoskeleton.

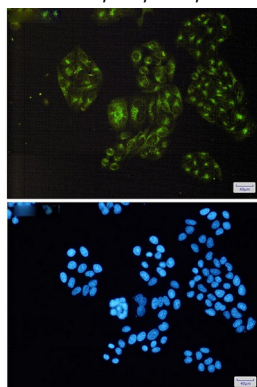
Research Area

Epigenetics and Nuclear Signaling

Image Data



Western blot analysis of PDLIM1 in K562, C6, 3T3, HeLa lysates using PDLIM1 antibody.



Immunocytochemistry analysis of PDLIM1(green) in HeLa using PDLIM1 antibody, and DAPI(blue)

Note

For research use only.