
Summary

Production Name	PDE1B Rabbit Monoclonal Antibody
Description	Recombinant Rabbit Monoclonal antibody
Host	Rabbit
Application	WB
Reactivity	Human,Mouse,Rat

Performance

Conjugation	Unconjugated
Modification	Unmodified
Isotype	IgG
Clonality	Monoclonal Antibody
Form	Liquid
Storage	Store at 4°C short term. Aliquot and store at -20°C long term. Avoid freeze/thaw cycles.
Buffer	50mM Tris-Glycine(pH 7.4), 0.15M NaCl, 40% Glycerol, 0.01% Sodium azide and 0.05% BSA
Purification	Affinity Purified

Immunogen

Gene Name	PDE1B
Alternative Names	PDE1B1; PDES1B; HEL-S-79p
Gene ID	5153
SwissProt ID	Q01064

Application

Dilution Ratio	WB: 1/500-1/1000
Molecular Weight	Calculated MW: 61 kDa; Observed MW: 61 kDa

Background

Product Name: PDE1B Rabbit Monoclonal Antibody
Catalog #: AMRe02410

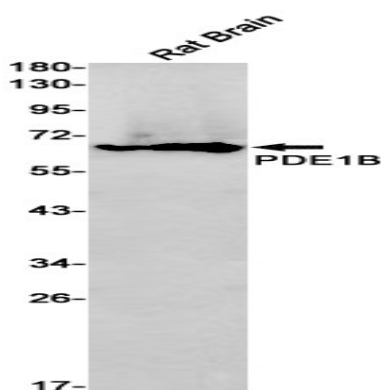


The protein encoded by this gene belongs to the cyclic nucleotide phosphodiesterase (PDE) family, and PDE1 subfamily. Members of the PDE1 family are calmodulin-dependent PDEs that are stimulated by a calcium-calmodulin complex. This PDE has dual-specificity for the second messengers, cAMP and cGMP, with a preference for cGMP as a substrate. cAMP and cGMP function as key regulators of many important physiological processes. Alternatively spliced transcript variants encoding different isoforms have been described for this gene.

Research Area

Signal Transduction

Image Data



Western blot analysis of PDE1B in rat Brain lysates using PDE1B antibody.

Note

For research use only.