

## Summary

<b>Production Name</b>	PAX6 Rabbit Monoclonal Antibody
<b>Description</b>	Recombinant Rabbit Monoclonal antibody
<b>Host</b>	Rabbit
<b>Application</b>	WB
<b>Reactivity</b>	Rat

## Performance

<b>Conjugation</b>	Unconjugated
<b>Modification</b>	Unmodified
<b>Isotype</b>	IgG
<b>Clonality</b>	Monoclonal Antibody
<b>Form</b>	Liquid
<b>Storage</b>	Store at 4°C short term. Aliquot and store at -20°C long term. Avoid freeze/thaw cycles.
<b>Buffer</b>	50mM Tris-Glycine(pH 7.4), 0.15M NaCl, 40% Glycerol, 0.01% Sodium azide and 0.05% BSA
<b>Purification</b>	Affinity Purified

## Immunogen

<b>Gene Name</b>	PAX6
<b>Alternative Names</b>	PAX6; AN2; Paired box protein Pax-6; Aniridia type II protein; Oculorhombin
<b>Gene ID</b>	5080
<b>SwissProt ID</b>	P26367

## Application

<b>Dilution Ratio</b>	WB: 1/500-1/1000
<b>Molecular Weight</b>	Calculated MW: 47 kDa; Observed MW: 47 kDa

## Background

**Product Name: PAX6 Rabbit Monoclonal Antibody**  
**Catalog #: AMRe02403**

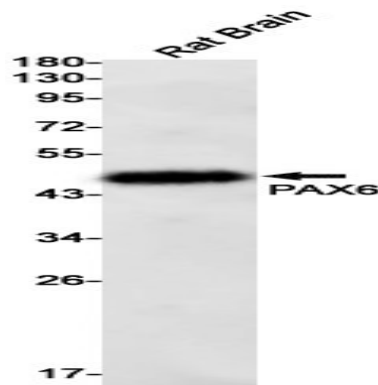


Transcription factor with important functions in the development of the eye, nose, central nervous system and pancreas. Required for the differentiation of pancreatic islet alpha cells (By similarity). Competes with PAX4 in binding to a common element in the glucagon, insulin and somatostatin promoters. Regulates specification of the ventral neuron subtypes by establishing the correct progenitor domains (By similarity).

## Research Area

Neuroscience

## Image Data



Western blot analysis of PAX6 in rat Brain lysates using PAX6 antibody.

## Note

For research use only.