

Summary

Production Name	P cadherin Rabbit Monoclonal Antibody
Description	Recombinant Rabbit Monoclonal antibody
Host	Rabbit
Application	WB,IHC-F,IHC-P,ICC/IF,IP
Reactivity	Human,Mouse,Rat

Performance

Conjugation	Unconjugated
Modification	Unmodified
Isotype	IgG
Clonality	Monoclonal Antibody
Form	Liquid
Storage	Store at 4°C short term. Aliquot and store at -20°C long term. Avoid freeze/thaw cycles.
Buffer	50mM Tris-Glycine(pH 7.4), 0.15M NaCl, 40% Glycerol, 0.01% Sodium azide and 0.05% BSA
Purification	Affinity Purified

Immunogen

Gene Name	CDH3
Alternative Names	CDHP; HJMD; PCAD;CDH3 ;Cadherin-3;Placental cadherin (P-cadherin)
Gene ID	1001
SwissProt ID	P22223

Application

Dilution Ratio	WB: 1/500-1/1000 IHC: 1/50-1/100 IF: 1/50-1/200 IP: 1/20
Molecular Weight	Calculated MW: 97 kDa; Observed MW: 130-150 kDa

Background

Product Name: P cadherin Rabbit Monoclonal Antibody
Catalog #: AMRe02400

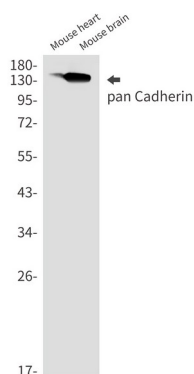


Cadherins are calcium-dependent cell adhesion proteins (PubMed:11976333). They preferentially interact with themselves in a homophilic manner in connecting cells; cadherins may thus contribute to the sorting of heterogeneous cell types. CDH1 is involved in mechanisms regulating cell-cell adhesions, mobility and proliferation of epithelial cells (PubMed:11976333). Has a potent invasive suppressor role. It is a ligand for integrin alpha-E/beta-7.

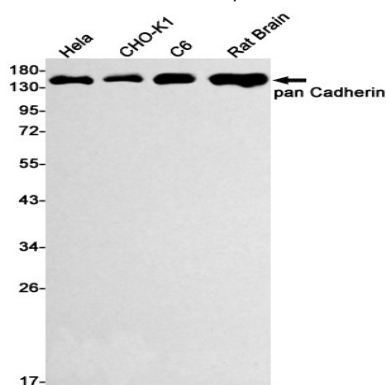
Research Area

Signal Transduction

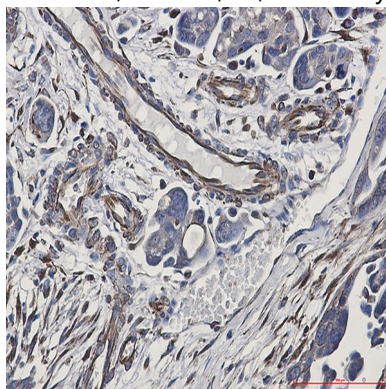
Image Data



Western blot analysis of pan Cadherin in mouse heart, mouse brain lysates using Cadherin antibody.



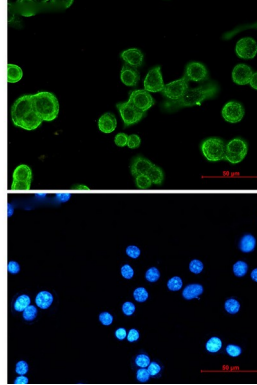
Western blot analysis of pan Cadherin in HeLa, CHO-K1, C6, rat Brain lysates using pan Cadherin antibody.



Product Name: P cadherin Rabbit Monoclonal Antibody
Catalog #: AMRe02400



Immunohistochemistry analysis of paraffin-embedded Human Cholangiocarcinoma using pan Cadherin antibody. High-pressure and temperature Sodium Citrate pH 6.0 was used for antigen retrieval.



Immunocytochemistry analysis of pan Cadherin (green) in MCF-7 using pan Cadherin antibody, and DAPI (blue).

Note

For research use only.