

**Product Name: Phospho-PAK1/2/3
(Ser144/Ser141/Ser154) Rabbit Monoclonal Antibody
Catalog #: AMRe02397**

Summary

Production Name	Phospho-PAK1/2/3 (Ser144/Ser141/Ser154) Rabbit Monoclonal Antibody
Description	Recombinant Rabbit Monoclonal antibody
Host	Rabbit
Application	WB,IHC-F,IHC-P,ICC/IF,IP
Reactivity	Human,Mouse,Rat

Performance

Conjugation	Unconjugated
Modification	Phosphorylated
Isotype	IgG
Clonality	Monoclonal Antibody
Form	Liquid
Storage	Store at 4°C short term. Aliquot and store at -20°C long term. Avoid freeze/thaw cycles.
Buffer	50mM Tris-Glycine(pH 7.4), 0.15M NaCl, 40% Glycerol, 0.01% Sodium azide and 0.05% BSA
Purification	Affinity Purified

Immunogen

Gene Name	PAK3
Alternative Names	PAK3; OPHN3; Serine/threonine-protein kinase PAK 3; Beta-PAK; Oligophrenin-3; p21-activated kinase 3; PAK-3
Gene ID	5063
SwissProt ID	O75914

Application

Dilution Ratio	WB: 1/500-1/1000 IHC: 1/50-1/100 IF: 1/50-1/200 IP: 1/20
Molecular Weight	Calculated MW: 62 kDa; Observed MW: 62 kDa

**Product Name: Phospho-PAK1/2/3
(Ser144/Ser141/Ser154) Rabbit Monoclonal Antibody
Catalog #: AMRe02397**

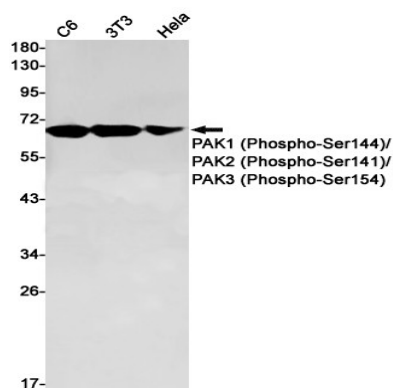
Background

PAK proteins are critical effectors that link Rho GTPases to cytoskeleton reorganization and nuclear signaling. PAK proteins serve as targets for the small GTP binding proteins Cdc42 and RAC and have been implicated in a wide range of biological activities. PAK3 forms an activated complex with GTP-bound RAS-like (P21), CDC2 and RAC1 proteins which then catalyzes a variety of targets.

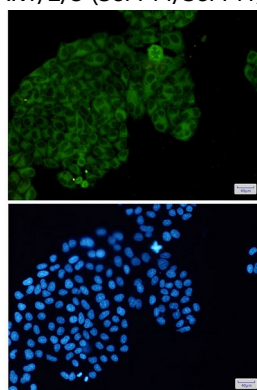
Research Area

Neuroscience

Image Data

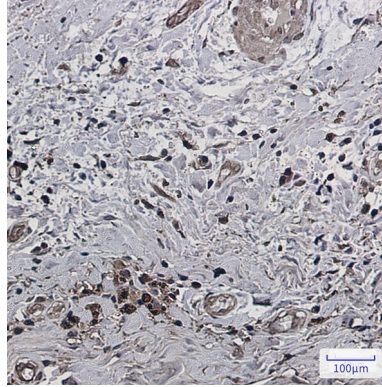


Western blot analysis of PAK1 (Phospho-Ser144)/PAK2 (Phospho-Ser141)/PAK3 (Phospho-Ser154) in C6, 3T3, HeLa lysates using Phospho-PAK1/2/3 (Ser144/Ser141/Ser154) antibody.



Immunocytochemistry analysis of PAK1 (Phospho-Ser144)/PAK2 (Phospho-Ser141)/PAK3 (Phospho-Ser154)(green) in HeLa using PAK1 (Phospho-Ser144)/PAK2 (Phospho-Ser141)/PAK3 (Phospho-Ser154) antibody, and DAPI(blue)

**Product Name: Phospho-PAK1/2/3
(Ser144/Ser141/Ser154) Rabbit Monoclonal Antibody
Catalog #: AMRe02397**



Immunohistochemistry analysis of paraffin-embedded Human breast cancer using Phospho-PAK1(Ser144)/2(Ser141)/3 (Ser154) antibody. High-pressure and temperature Sodium Citrate pH 6.0 was used for antigen retrieval.

Note

For research use only.