

---

## Summary

|                        |                                        |
|------------------------|----------------------------------------|
| <b>Production Name</b> | ORP150 Rabbit Monoclonal Antibody      |
| <b>Description</b>     | Recombinant Rabbit Monoclonal antibody |
| <b>Host</b>            | Rabbit                                 |
| <b>Application</b>     | WB,IHC-P                               |
| <b>Reactivity</b>      | Human,Mouse,Rat                        |

## Performance

|                     |                                                                                          |
|---------------------|------------------------------------------------------------------------------------------|
| <b>Conjugation</b>  | Unconjugated                                                                             |
| <b>Modification</b> | Unmodified                                                                               |
| <b>Isotype</b>      | IgG                                                                                      |
| <b>Clonality</b>    | Monoclonal Antibody                                                                      |
| <b>Form</b>         | Liquid                                                                                   |
| <b>Storage</b>      | Store at 4°C short term. Aliquot and store at -20°C long term. Avoid freeze/thaw cycles. |
| <b>Buffer</b>       | 50mM Tris-Glycine(pH 7.4), 0.15M NaCl, 40% Glycerol, 0.01% Sodium azide and 0.05% BSA    |
| <b>Purification</b> | Affinity Purified                                                                        |

## Immunogen

|                          |                               |
|--------------------------|-------------------------------|
| <b>Gene Name</b>         | HYOU1                         |
| <b>Alternative Names</b> | Grp170; HSP12A; Hyou1; Orp150 |
| <b>Gene ID</b>           | 10525                         |
| <b>SwissProt ID</b>      | Q9Y4L1                        |

## Application

|                         |                                              |
|-------------------------|----------------------------------------------|
| <b>Dilution Ratio</b>   | WB: 1/500-1/1000 IHC: 1/50-1/100             |
| <b>Molecular Weight</b> | Calculated MW: 111 kDa; Observed MW: 150 kDa |

## Background

---

**Product Name: ORP150 Rabbit Monoclonal Antibody**  
**Catalog #: AMRe02375**

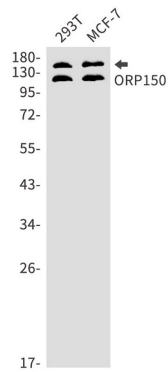


Has a pivotal role in cytoprotective cellular mechanisms triggered by oxygen deprivation. May play a role as a molecular chaperone and participate in protein folding.

## Research Area

Cardiovascular

## Image Data



Western blot analysis of ORP150 in 293T, MCF-7 lysates using ORP150 antibody.

## Note

For research use only.