

Summary

Production Name	Nrf1 Rabbit Monoclonal Antibody
Description	Recombinant Rabbit Monoclonal antibody
Host	Rabbit
Application	WB,IHC-F,IHC-P,ICC/IF,IP
Reactivity	Human,Mouse,Rat

Performance

Conjugation	Unconjugated
Modification	Unmodified
Isotype	IgG
Clonality	Monoclonal Antibody
Form	Liquid
Storage	Store at 4°C short term. Aliquot and store at -20°C long term. Avoid freeze/thaw cycles.
Buffer	50mM Tris-Glycine(pH 7.4), 0.15M NaCl, 40% Glycerol, 0.01% Sodium azide and 0.05% BSA
Purification	Affinity Purified

Immunogen

Gene Name	NRF1 alpha pal; alpha palindromic binding protein; Alpha palindromic-binding protein;
Alternative Names	Alpha-pal; locus control region factor 1; NFE2 related factor 1; NRF-1; Nrf1; NRF1_HUMAN; Nuclear respiratory factor 1; transcription factor 11.
Gene ID	4899
SwissProt ID	Q16656

Application

Dilution Ratio	WB: 1/500-1/1000 IHC: 1/50-1/100 IF: 1/50-1/200 IP: 1/20
Molecular Weight	Calculated MW: 54 kDa; Observed MW: 68 kDa

Product Name: Nrf1 Rabbit Monoclonal Antibody
Catalog #: AMRe02355



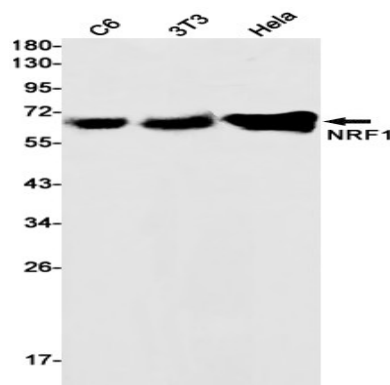
Background

Transcription factor that activates the expression of the EIF2S1 (EIF2-alpha) gene. Links the transcriptional modulation of key metabolic genes to cellular growth and development. Implicated in the control of nuclear genes required for respiration, heme biosynthesis, and mitochondrial DNA transcription and replication.

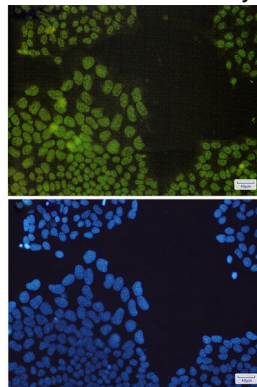
Research Area

Epigenetics and Nuclear Signaling

Image Data

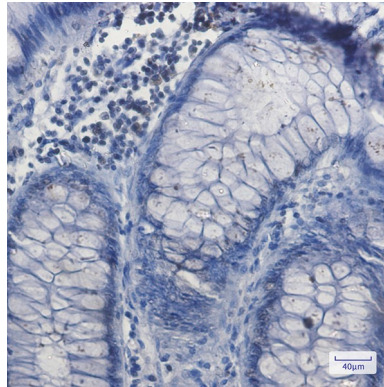


Western blot analysis of NRF1 in C6, 3T3, HeLa lysates using Nrf1 antibody.



Immunocytochemistry analysis of NRF1(green) in HeLa using NRF1 antibody, and DAPI(blue)

Product Name: Nrf1 Rabbit Monoclonal Antibody
Catalog #: AMRe02355



Immunohistochemistry analysis of paraffin-embedded Human colon cancer using NRF1 antibody. High-pressure and temperature Sodium Citrate pH 6.0 was used for antigen retrieval.

Note

For research use only.