

**Product Name: NF-KB p100 Rabbit Monoclonal Antibody**  
**Catalog #: AMRe02342**

---

## Summary

<b>Production Name</b>	NF-KB p100 Rabbit Monoclonal Antibody
<b>Description</b>	Recombinant Rabbit Monoclonal antibody
<b>Host</b>	Rabbit
<b>Application</b>	WB,ICC/IF,IP
<b>Reactivity</b>	Human,Mouse

## Performance

<b>Conjugation</b>	Unconjugated
<b>Modification</b>	Unmodified
<b>Isotype</b>	IgG
<b>Clonality</b>	Monoclonal Antibody
<b>Form</b>	Liquid
<b>Storage</b>	Store at 4°C short term. Aliquot and store at -20°C long term. Avoid freeze/thaw cycles.
<b>Buffer</b>	50mM Tris-Glycine(pH 7.4), 0.15M NaCl, 40% Glycerol, 0.01% Sodium azide and 0.05% BSA
<b>Purification</b>	Affinity Purified

## Immunogen

<b>Gene Name</b>	NFKB2
<b>Alternative Names</b>	NFKB2; LYT10; Nuclear factor NF-kappa-B p100 subunit; DNA-binding factor KBF2; H2TF1; Lymphocyte translocation chromosome 10 protein; Nuclear factor of kappa light polypeptide gene enhancer in B-cells 2; Oncogene Lyt-10; Lyt10
<b>Gene ID</b>	4791
<b>SwissProt ID</b>	Q00653

## Application

<b>Dilution Ratio</b>	WB: 1/500-1/1000 IF: 1/50-1/200 IP: 1/20
<b>Molecular Weight</b>	Calculated MW: 97 kDa; Observed MW: 120 kDa

---

**Product Name: NF-KB p100 Rabbit Monoclonal Antibody**  
**Catalog #: AMRe02342**

---

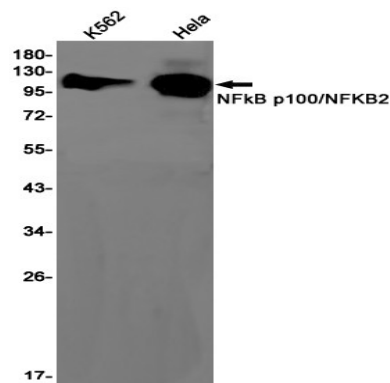
## Background

Transcription factors of the nuclear factor  $\kappa$  B (NF- $\kappa$ B)/Rel family play a pivotal role in inflammatory and immune responses. NF- $\kappa$ B-activating agents can induce the phosphorylation of I $\kappa$ B proteins, targeting them for rapid degradation through the ubiquitin-proteasome pathway and releasing NF- $\kappa$ B to enter the nucleus where it regulates gene expression.

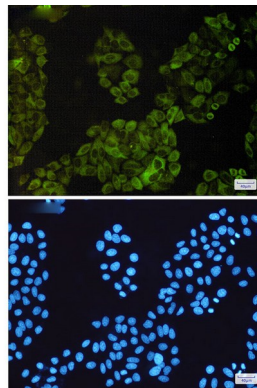
## Research Area

Signal Transduction

## Image Data



Western blot analysis of NF-KB p100/NF-KB2 in K562, HeLa lysates using NF-KB p100 antibody.



Immunocytochemistry analysis of NF-KB p100/NF-KB2(green) in HeLa using NF-KB p100/NF-KB2 antibody, and DAPI(blue)

## Note

For research use only.