
Summary

Production Name	NDUFA1 Rabbit Monoclonal Antibody
Description	Recombinant Rabbit Monoclonal antibody
Host	Rabbit
Application	WB,IHC-P,IP
Reactivity	Human

Performance

Conjugation	Unconjugated
Modification	Unmodified
Isotype	IgG
Clonality	Monoclonal Antibody
Form	Liquid
Storage	Store at 4°C short term. Aliquot and store at -20°C long term. Avoid freeze/thaw cycles.
Buffer	50mM Tris-Glycine(pH 7.4), 0.15M NaCl, 40% Glycerol, 0.01% Sodium azide and 0.05% BSA
Purification	Affinity Purified

Immunogen

Gene Name	NDUFA1
Alternative Names	MWFE; ZNF183; CI-MWFE
Gene ID	4694
SwissProt ID	O15239

Application

Dilution Ratio	WB: 1/500-1/1000 IHC: 1/50-1/100 IP: 1/20
Molecular Weight	Calculated MW: 8 kDa; Observed MW: 8 kDa

Background

Product Name: NDUFA1 Rabbit Monoclonal Antibody
Catalog #: AMRe02311

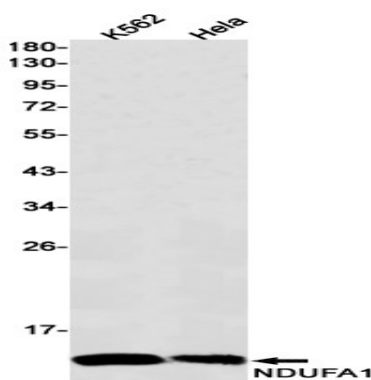


Accessory subunit of the mitochondrial membrane respiratory chain NADH dehydrogenase (Complex I), that is believed not to be involved in catalysis. Complex I functions in the transfer of electrons from NADH to the respiratory chain. The immediate electron acceptor for the enzyme is believed to be ubiquinone.

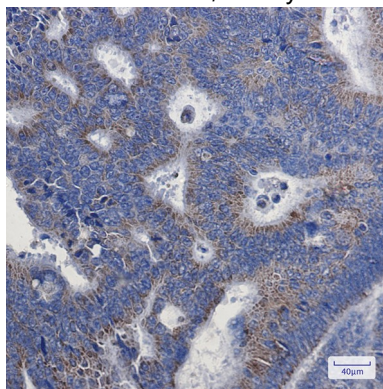
Research Area

Tags & Cell Markers

Image Data



Western blot analysis of NDUFA1 in K562, HeLa lysates using NDUFA1 antibody.



Immunohistochemistry analysis of paraffin-embedded Human colon cancer using NDUFA1 antibody. High-pressure and temperature Sodium Citrate pH 6.0 was used for antigen retrieval.

Note

For research use only.