

Summary

Production Name	MYL2 Rabbit Monoclonal Antibody
Description	Recombinant Rabbit Monoclonal antibody
Host	Rabbit
Application	WB,IHC-P,IP
Reactivity	Mouse,Rat

Performance

Conjugation	Unconjugated
Modification	Unmodified
Isotype	IgG
Clonality	Monoclonal Antibody
Form	Liquid
Storage	Store at 4°C short term. Aliquot and store at -20°C long term. Avoid freeze/thaw cycles.
Buffer	50mM Tris-Glycine(pH 7.4), 0.15M NaCl, 40% Glycerol, 0.01% Sodium azide and 0.05% BSA
Purification	Affinity Purified

Immunogen

Gene Name	MYL2
Alternative Names	Myosin regulatory light chain 2; ventricular/cardiac muscle isoform; MLC-2; MLC-2v
Gene ID	4633
SwissProt ID	P10916

Application

Dilution Ratio	WB: 1/500-1/1000 IHC: 1/50-1/100 IP: 1/20
Molecular Weight	Calculated MW: 19 kDa; Observed MW: 19 kDa

Background

Product Name: MYL2 Rabbit Monoclonal Antibody
Catalog #: AMRe02303

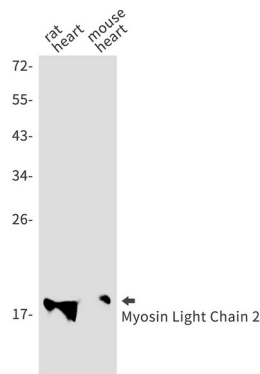


Myosin is composed of six polypeptide chains: two identical heavy chains and two pairs of light chains. Myosin light chain 2 (MLC2), also known as myosin regulatory light chain (MRLC), RLC, or LC20, has many isoforms depending on its distribution. In smooth muscle, MLC2 is phosphorylated at Thr18 and Ser19 by myosin light chain kinase (MLCK) in a Ca²⁺/calmodulin-dependent manner.

Research Area

Signal Transduction

Image Data



Western blot analysis of Myosin Light Chain 2 in rat heart, mouse heart lysates using MYL2 antibody.

Note

For research use only.