

Product Name: Myelin Basic Protein Rabbit Monoclonal Antibody
Catalog #: AMRe02295



Summary

Production Name	Myelin Basic Protein Rabbit Monoclonal Antibody
Description	Recombinant Rabbit Monoclonal antibody
Host	Rabbit
Application	WB
Reactivity	Mouse,Rat

Performance

Conjugation	Unconjugated
Modification	Unmodified
Isotype	IgG
Clonality	Monoclonal Antibody
Form	Liquid
Storage	Store at 4°C short term. Aliquot and store at -20°C long term. Avoid freeze/thaw cycles.
Buffer	50mM Tris-Glycine(pH 7.4), 0.15M NaCl, 40% Glycerol, 0.01% Sodium azide and 0.05% BSA
Purification	Affinity Purified

Immunogen

Gene Name	MBP
Alternative Names	Myelin membrane encephalitogenic protein; Myelin A1 protein
Gene ID	4155
SwissProt ID	P02686

Application

Dilution Ratio	WB: 1/500-1/1000
Molecular Weight	Calculated MW: 33 kDa; Observed MW: 18 kDa

Product Name: Myelin Basic Protein Rabbit Monoclonal Antibody
Catalog #: AMRe02295



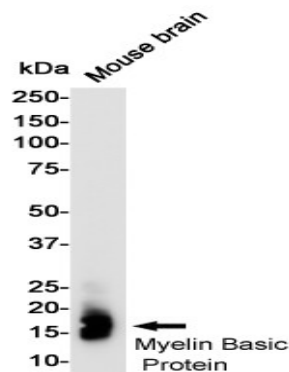
Background

MBP belongs to the myelin basic protein family. The classic group of MBP isoforms (isoform 4-isoform 14) are the most abundant protein components of the myelin membrane in the CNS. They have a role in both its formation and stabilization. The smaller isoforms might have an important role in remyelination of denuded axons in multiple sclerosis.

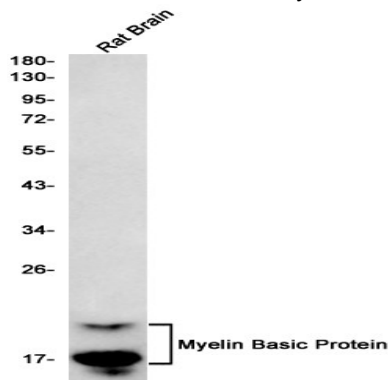
Research Area

Neuroscience

Image Data



Western blot analysis of Myelin Basic Protein in mouse Brain lysates using Myelin Basic Protein antibody.



Western blot analysis of Myelin Basic Protein in rat Brain lysates using Myelin Basic Protein antibody.

Note

For research use only.