

## Summary

|                        |  |
|------------------------|--|
| <b>Production Name</b> | Mucin 1 Rabbit Monoclonal Antibody     |
| <b>Description</b>     | Recombinant Rabbit Monoclonal antibody |
| <b>Host</b>            | Rabbit                                 |
| <b>Application</b>     | WB,IHC-F,IHC-P,ICC/IF,IP               |
| <b>Reactivity</b>      | Human                                  |

## Performance

|                     |  |
|---------------------|--|
| <b>Conjugation</b>  | Unconjugated   |
| <b>Modification</b> | Unmodified   |
| <b>Isotype</b>      | IgG  |
| <b>Clonality</b>    | Monoclonal Antibody  |
| <b>Form</b>         | Liquid   |
| <b>Storage</b>      | Store at 4°C short term. Aliquot and store at -20°C long term. Avoid freeze/thaw cycles. |
| <b>Buffer</b>       | 50mM Tris-Glycine(pH 7.4), 0.15M NaCl, 40% Glycerol, 0.01% Sodium azide and 0.05% BSA    |
| <b>Purification</b> | Affinity Purified  |

## Immunogen

|                          |  |
|--------------------------|--|
| <b>Gene Name</b>         | MUC1<br>MUC1; PUM; Mucin-1; MUC-1; Breast carcinoma-associated antigen DF3; Carcinoma-associated mucin; Episialin; H23AG; Krebs von den Lungen-6; KL-6; PEMT; Peanut-reactive urinary mucin; PUM; Polymorphic epithelial mucin; PEM; Tumor-associated ep |
| <b>Alternative Names</b> |  |
| <b>Gene ID</b>           | 4582   |
| <b>SwissProt ID</b>      | P15941   |

## Application

|                         |  |
|-------------------------|--|
| <b>Dilution Ratio</b>   | WB: 1/500-1/1000 IHC: 1/50-1/100 IF: 1/50-1/200 IP: 1/20 |
| <b>Molecular Weight</b> | Calculated MW: 122 kDa; Observed MW: 25 kDa              |

**Product Name: Mucin 1 Rabbit Monoclonal Antibody**  
**Catalog #: AMRe02288**



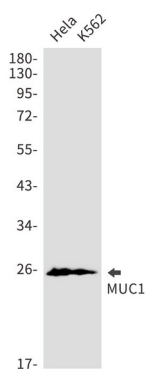
## Background

This gene is a member of the mucin family and encodes a membrane bound, glycosylated phosphoprotein. This protein is anchored to the apical surface of many epithelia by a transmembrane domain, with the degree of glycosylation varying with cell type. The protein serves a protective function, binding to pathogens, as well as functioning in a cell signaling capacity.

## Research Area

Tags & Cell Markers

## Image Data



Western blot analysis of MUC1 in HeLa, K562 lysates using Mucin 1 antibody.

## Note

For research use only.