

**Product Name: Phospho-mTOR (Ser2448) Rabbit
Monoclonal Antibody
Catalog #: AMRe02286**

Summary

Production Name	Phospho-mTOR (Ser2448) Rabbit Monoclonal Antibody
Description	Recombinant Rabbit Monoclonal antibody
Host	Rabbit
Application	WB,IHC-P
Reactivity	Human,Mouse

Performance

Conjugation	Unconjugated
Modification	Phosphorylated
Isotype	IgG
Clonality	Monoclonal Antibody
Form	Liquid
Storage	Store at 4°C short term. Aliquot and store at -20°C long term. Avoid freeze/thaw cycles.
Buffer	50mM Tris-Glycine(pH 7.4), 0.15M NaCl, 40% Glycerol, 0.01% Sodium azide and 0.05% BSA
Purification	Affinity Purified

Immunogen

Gene Name	MTOR
Alternative Names	MTOR; FRAP; FRAP1; FRAP2; RAFT1; RAPT1; Serine/threonine-protein kinase mTOR; FK506-binding protein 12-rapamycin complex-associated protein 1; FKBP12-rapamycin complex-associated protein; Mammalian target of rapamycin; mTOR; Mechanistic tar
Gene ID	2475
SwissProt ID	P42345

Application

Dilution Ratio	WB: 1/500-1/1000 IHC: 1/50-1/100
Molecular Weight	Calculated MW: 289 kDa; Observed MW: 289 kDa

Product Name: Phospho-mTOR (Ser2448) Rabbit Monoclonal Antibody
Catalog #: AMRe02286

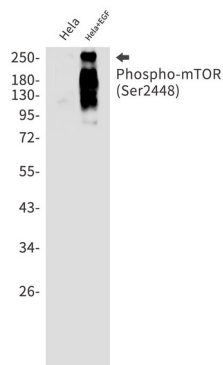
Background

An atypical kinase belonging to the PIKK family of kinases. Controls cell growth through protein synthesis regulation. Downstream of PI3K/Akt pathway and required for cell survival. Acts as the target for the cell-cycle arrest and immunosuppressive effects of the FKBP12-rapamycin complex.

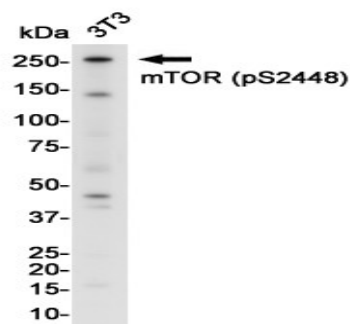
Research Area

Cell Biology

Image Data

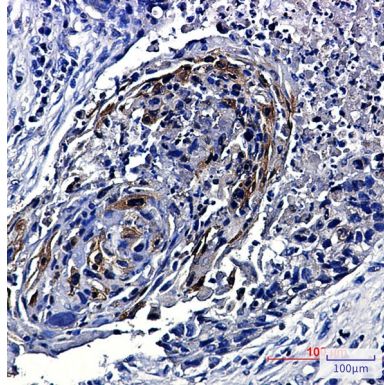


Western blot analysis of Phospho-mTOR (Ser2448) in HeLa, HeLa+EGF lysates using Phospho-mTOR (Ser2448) antibody.



Western blot analysis of mTOR (Phospho-Ser2448) in 3t3 lysates using mTOR (Phospho-Ser2448) antibody.

**Product Name: Phospho-mTOR (Ser2448) Rabbit
Monoclonal Antibody
Catalog #: AMRe02286**



Immunohistochemistry analysis of paraffin-embedded Human lung cancer using Phospho-mTOR (Ser2448) antibody. High-pressure and temperature Sodium Citrate pH 6.0 was used for antigen retrieval.

Note

For research use only.