

**Product Name: Phospho-MSK1 (Ser376) Rabbit
Monoclonal Antibody
Catalog #: AMRe02277**

Summary

Production Name	Phospho-MSK1 (Ser376) Rabbit Monoclonal Antibody
Description	Recombinant Rabbit Monoclonal antibody
Host	Rabbit
Application	WB,IHC-P,IP
Reactivity	Human,Rat

Performance

Conjugation	Unconjugated
Modification	Phosphorylated
Isotype	IgG
Clonality	Monoclonal Antibody
Form	Liquid
Storage	Store at 4°C short term. Aliquot and store at -20°C long term. Avoid freeze/thaw cycles.
Buffer	50mM Tris-Glycine(pH 7.4), 0.15M NaCl, 40% Glycerol, 0.01% Sodium azide and 0.05% BSA
Purification	Affinity Purified

Immunogen

Gene Name	RPS6KA5
Alternative Names	RPS6KA5; MSK1; Ribosomal protein S6 kinase alpha-5; S6K-alpha-5; 90 kDa ribosomal protein S6 kinase 5; Nuclear mitogen- and stress-activated protein kinase 1; RSK-like protein kinase; RSKL
Gene ID	9252
SwissProt ID	O75582

Application

Dilution Ratio	WB: 1/500-1/1000 IHC: 1/50-1/100 IP: 1/20
Molecular Weight	Calculated MW: 90 kDa; Observed MW: 90 kDa

Product Name: Phospho-MSK1 (Ser376) Rabbit Monoclonal Antibody
Catalog #: AMRe02277

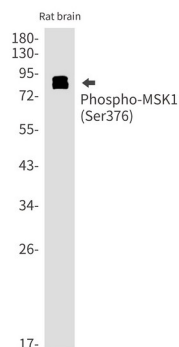
Background

Serine/threonine-protein kinase that is required for the mitogen or stress-induced phosphorylation of the transcription factors CREB1 and ATF1 and for the regulation of the transcription factors RELA, STAT3 and ETV1/ER81, and that contributes to gene activation by histone phosphorylation and functions in the regulation of inflammatory genes. Phosphorylates CREB1 and ATF1 in response to mitogenic or stress stimuli such as UV-C irradiation, epidermal growth factor (EGF) and anisomycin.

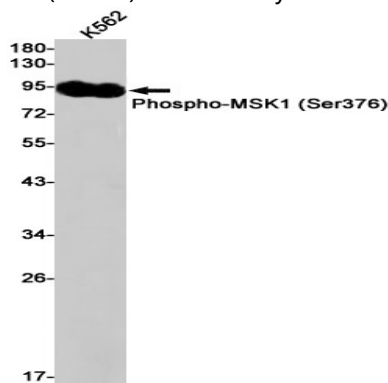
Research Area

Signal Transduction

Image Data

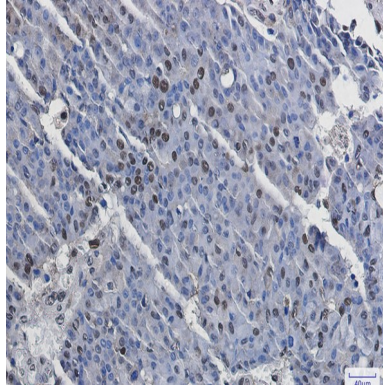


Western blot analysis of Phospho-MSK1 (Ser376) in rat brain lysates using Phospho-MSK1 (Ser376) antibody.



Western blot analysis of Phospho-MSK1 (Ser376) in K562 lysates using Phospho-MSK1 (Ser376) antibody.

**Product Name: Phospho-MSK1 (Ser376) Rabbit
Monoclonal Antibody
Catalog #: AMRe02277**



Immunohistochemistry analysis of paraffin-embedded Human breast cancer using MSK1 (Phospho-Ser376) antibody. High-pressure and temperature Sodium Citrate pH 6.0 was used for antigen retrieval.

Note

For research use only.