

**Product Name: MSH2 Rabbit Monoclonal Antibody**  
**Catalog #: AMRe02276**



## Summary

<b>Production Name</b>	MSH2 Rabbit Monoclonal Antibody
<b>Description</b>	Recombinant Rabbit Monoclonal antibody
<b>Host</b>	Rabbit
<b>Application</b>	WB,IP
<b>Reactivity</b>	Human

## Performance

<b>Conjugation</b>	Unconjugated
<b>Modification</b>	Unmodified
<b>Isotype</b>	IgG
<b>Clonality</b>	Monoclonal Antibody
<b>Form</b>	Liquid
<b>Storage</b>	Store at 4°C short term. Aliquot and store at -20°C long term. Avoid freeze/thaw cycles.
<b>Buffer</b>	50mM Tris-Glycine(pH 7.4), 0.15M NaCl, 40% Glycerol, 0.01% Sodium azide and 0.05% BSA
<b>Purification</b>	Affinity Purified

## Immunogen

<b>Gene Name</b>	MSH2
<b>Alternative Names</b>	DNA mismatch repair protein Msh2; MutS protein homolog 2
<b>Gene ID</b>	4436
<b>SwissProt ID</b>	P43246

## Application

<b>Dilution Ratio</b>	WB: 1/500-1/1000 IP: 1/20
<b>Molecular Weight</b>	Calculated MW: 105 kDa; Observed MW: 105 kDa

## Background

**Product Name: MSH2 Rabbit Monoclonal Antibody**  
**Catalog #: AMRe02276**

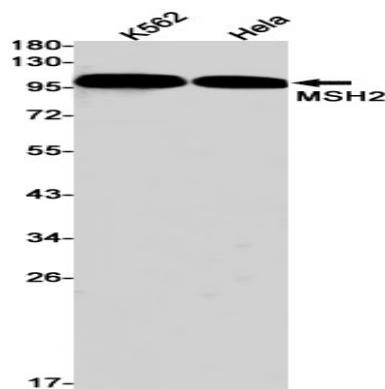


MSH2 (MutS homologue 2) forms the hMutS- $\alpha$  dimer with MSH6 and is an essential component of the mismatch repair process. hMutS- $\alpha$  is part of the BRCA1-associated surveillance complex (BASC), a complex that also contains BRCA1, MLH1, ATM, BLM, PMS2 proteins and the Rad50-Mre11-NBS1 complex.

## Research Area

Epigenetics and Nuclear Signaling

## Image Data



Western blot analysis of MSH2 in K562, HeLa lysates using MSH2 antibody.

## Note

For research use only.