

Product Name: MS2 Rabbit Monoclonal Antibody
Catalog #: AMRe02274



Summary

Production Name	MS2 Rabbit Monoclonal Antibody
Description	Recombinant Rabbit Monoclonal antibody
Host	Rabbit
Application	WB,IP
Reactivity	Human,Mouse

Performance

Conjugation	Unconjugated
Modification	Unmodified
Isotype	IgG
Clonality	Monoclonal Antibody
Form	Liquid
Storage	Store at 4°C short term. Aliquot and store at -20°C long term. Avoid freeze/thaw cycles.
Buffer	50mM Tris-Glycine(pH 7.4), 0.15M NaCl, 40% Glycerol, 0.01% Sodium azide and 0.05% BSA
Purification	Affinity Purified

Immunogen

Gene Name	ADAM8
Alternative Names	MS2; CD156; CD156a
Gene ID	101
SwissProt ID	P78325

Application

Dilution Ratio	WB: 1/500-1/1000 IP: 1/20
Molecular Weight	Calculated MW: 89 kDa; Observed MW: 89 kDa

Background

Product Name: MS2 Rabbit Monoclonal Antibody
Catalog #: AMRe02274

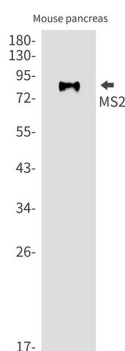


Possible involvement in extravasation of leukocytes.

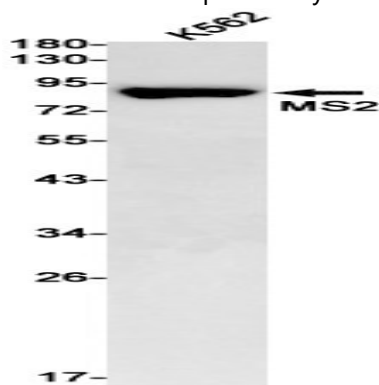
Research Area

Cell Biology

Image Data



Western blot analysis of MS2 in mouse pancreas lysates using MS2 antibody.



Western blot analysis of MS2 in K562 lysates using MS2 antibody.

Note

For research use only.