

---

## Summary

<b>Production Name</b>	MLK3 Rabbit Monoclonal Antibody
<b>Description</b>	Recombinant Rabbit Monoclonal antibody
<b>Host</b>	Rabbit
<b>Application</b>	WB,ICC/IF
<b>Reactivity</b>	Human

## Performance

<b>Conjugation</b>	Unconjugated
<b>Modification</b>	Unmodified
<b>Isotype</b>	IgG
<b>Clonality</b>	Monoclonal Antibody
<b>Form</b>	Liquid
<b>Storage</b>	Store at 4°C short term. Aliquot and store at -20°C long term. Avoid freeze/thaw cycles.
<b>Buffer</b>	50mM Tris-Glycine(pH 7.4), 0.15M NaCl, 40% Glycerol, 0.01% Sodium azide and 0.05% BSA
<b>Purification</b>	Affinity Purified

## Immunogen

<b>Gene Name</b>	MAP3K11
<b>Alternative Names</b>	MAP3K11; MLK3; PTK1; SPRK; Mitogen-activated protein kinase kinase kinase 11; Mixed lineage kinase 3; Src-homology 3 domain-containing proline-rich kinase
<b>Gene ID</b>	4296
<b>SwissProt ID</b>	Q16584

## Application

<b>Dilution Ratio</b>	WB: 1/500-1/1000 IF: 1/50-1/200
<b>Molecular Weight</b>	Calculated MW: 93 kDa; Observed MW: 93 kDa

**Product Name: MLK3 Rabbit Monoclonal Antibody**  
**Catalog #: AMRe02262**



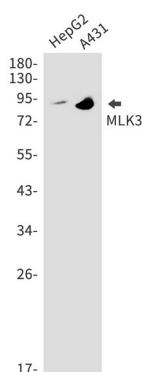
## Background

The protein encoded by this gene is a member of the serine/threonine kinase family. This kinase contains a SH3 domain and a leucine zipper-basic motif. This kinase preferentially activates MAPK8/JNK kinase, and functions as a positive regulator of JNK signaling pathway. This kinase can directly phosphorylate, and activates IκappaB kinase alpha and beta, and is found to be involved in the transcription activity of NF-kappaB mediated by Rho family GTPases and CDC42.

## Research Area

Signal Transduction

## Image Data



Western blot analysis of MLK3 in HepG2, A431 lysates using MLK3 antibody.

## Note

For research use only.