

Product Name: MLH1 Rabbit Monoclonal Antibody
Catalog #: AMRe02261



Summary

Production Name	MLH1 Rabbit Monoclonal Antibody
Description	Recombinant Rabbit Monoclonal antibody
Host	Rabbit
Application	WB
Reactivity	Rat

Performance

Conjugation	Unconjugated
Modification	Unmodified
Isotype	IgG
Clonality	Monoclonal Antibody
Form	Liquid
Storage	Store at 4°C short term. Aliquot and store at -20°C long term. Avoid freeze/thaw cycles.
Buffer	50mM Tris-Glycine(pH 7.4), 0.15M NaCl, 40% Glycerol, 0.01% Sodium azide and 0.05% BSA
Purification	Affinity Purified

Immunogen

Gene Name	MLH1
Alternative Names	MLH1; COCA2; DNA mismatch repair protein Mlh1; MutL protein homolog 1
Gene ID	4292
SwissProt ID	P40692

Application

Dilution Ratio	WB: 1/500-1/1000
Molecular Weight	Calculated MW: 85 kDa; Observed MW: 85 kDa

Background

Product Name: MLH1 Rabbit Monoclonal Antibody
Catalog #: AMRe02261

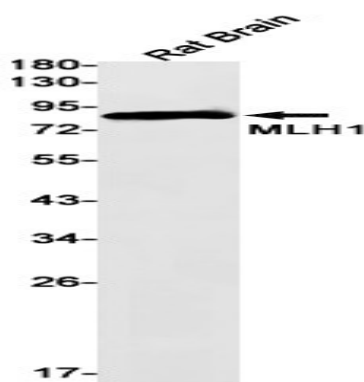


This gene was identified as a locus frequently mutated in hereditary nonpolyposis colon cancer (HNPCC). It is a human homolog of the *E. coli* DNA mismatch repair gene *mutL*, consistent with the characteristic alterations in microsatellite sequences (RER+ phenotype) found in HNPCC. Alternatively spliced transcript variants encoding different isoforms have been described, but their full-length natures have not been determined.

Research Area

Epigenetics and Nuclear Signaling

Image Data



Western blot analysis of MLH1 in rat Brain lysates using MLH1 antibody.

Note

For research use only.