
Summary

Production Name	MiTF Rabbit Monoclonal Antibody
Description	Recombinant Rabbit Monoclonal antibody
Host	Rabbit
Application	WB
Reactivity	Human,Hamster

Performance

Conjugation	Unconjugated
Modification	Unmodified
Isotype	IgG
Clonality	Monoclonal Antibody
Form	Liquid
Storage	Store at 4°C short term. Aliquot and store at -20°C long term. Avoid freeze/thaw cycles.
Buffer	50mM Tris-Glycine(pH 7.4), 0.15M NaCl, 40% Glycerol, 0.01% Sodium azide and 0.05% BSA
Purification	Affinity Purified

Immunogen

Gene Name	MITF
Alternative Names	MITF; BHLHE32; Microphthalmia-associated transcription factor; Class E basic helix-loop-helix protein 32; bHLHe32
Gene ID	4286
SwissProt ID	O75030

Application

Dilution Ratio	WB: 1/500-1/1000
Molecular Weight	Calculated MW: 59 kDa; Observed MW: 52 kDa

Product Name: MiTF Rabbit Monoclonal Antibody
Catalog #: AMRe02256



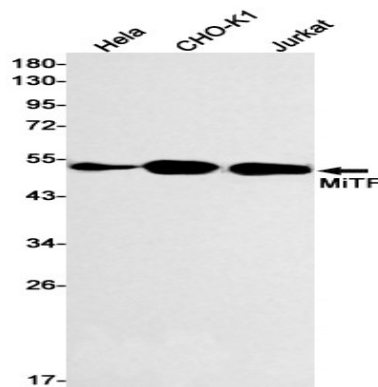
Background

Microphthalmia-associated transcription factor (MITF) is a basic helix-loop-helix leucine zipper transcription factor that is most widely known for its roles in melanocyte, ophthalmic, and osteoclast development. Plays a critical role in the differentiation of various cell types as neural crest-derived melanocytes, mast cells, osteoclasts and optic cup-derived retinal pigment epithelium.

Research Area

Epigenetics and Nuclear Signaling

Image Data



Western blot analysis of MiTF in HeLa, CHO-K1, Jurkat lysates using MiTF antibody.

Note

For research use only.