

---

## Summary

|                        |  |
|------------------------|--|
| <b>Production Name</b> | MetRS Rabbit Monoclonal Antibody       |
| <b>Description</b>     | Recombinant Rabbit Monoclonal antibody |
| <b>Host</b>            | Rabbit                                 |
| <b>Application</b>     | WB,ICC/IF                              |
| <b>Reactivity</b>      | Human                                  |

## Performance

|                     |  |
|---------------------|--|
| <b>Conjugation</b>  | Unconjugated   |
| <b>Modification</b> | Unmodified   |
| <b>Isotype</b>      | IgG  |
| <b>Clonality</b>    | Monoclonal Antibody  |
| <b>Form</b>         | Liquid   |
| <b>Storage</b>      | Store at 4°C short term. Aliquot and store at -20°C long term. Avoid freeze/thaw cycles. |
| <b>Buffer</b>       | 50mM Tris-Glycine(pH 7.4), 0.15M NaCl, 40% Glycerol, 0.01% Sodium azide and 0.05% BSA    |
| <b>Purification</b> | Affinity Purified  |

## Immunogen

|                          |  |
|--------------------------|--|
| <b>Gene Name</b>         | MARS1  |
| <b>Alternative Names</b> | MRS; ILLD; CMT2U; ILFS2; METRS; MTRNS; SPG70 |
| <b>Gene ID</b>           | 4141   |
| <b>SwissProt ID</b>      | P56192                                       |

## Application

|                         |  |
|-------------------------|--|
| <b>Dilution Ratio</b>   | WB: 1/500-1/1000 IF: 1/50-1/200              |
| <b>Molecular Weight</b> | Calculated MW: 101 kDa; Observed MW: 101 kDa |

## Background

---

**Product Name: MetRS Rabbit Monoclonal Antibody**  
**Catalog #: AMRe02250**

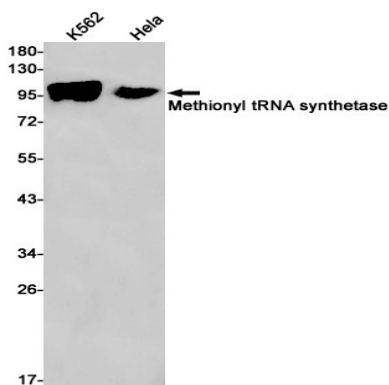


Catalyzes the specific attachment of an amino acid to its cognate tRNA in a 2 step reaction: the amino acid (AA) is first activated by ATP to form AA-AMP and then transferred to the acceptor end of the tRNA.

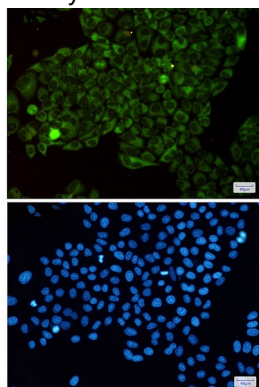
## Research Area

Signal Transduction

## Image Data



Western blot analysis of Methionyl tRNA synthetase in K562, HeLa lysates using MetRS antibody.



Immunocytochemistry analysis of Methionyl tRNA synthetase(green) in HeLa using Methionyl tRNA synthetase antibody, and DAPI(blue)

## Note

For research use only.