

**Product Name: Metabotropic Glutamate Receptor 2
Rabbit Monoclonal Antibody
Catalog #: AMRe02249**

Summary

Production Name	Metabotropic Glutamate Receptor 2 Rabbit Monoclonal Antibody
Description	Recombinant Rabbit Monoclonal antibody
Host	Rabbit
Application	WB,IHC-P
Reactivity	Human,Mouse

Performance

Conjugation	Unconjugated
Modification	Unmodified
Isotype	IgG
Clonality	Monoclonal Antibody
Form	Liquid
Storage	Store at 4°C short term. Aliquot and store at -20°C long term. Avoid freeze/thaw cycles.
Buffer	50mM Tris-Glycine(pH 7.4), 0.15M NaCl, 40% Glycerol, 0.01% Sodium azide and 0.05% BSA
Purification	Affinity Purified

Immunogen

Gene Name	GRM2
Alternative Names	GRM2; GPRC1B; MGLUR2; Metabotropic glutamate receptor 2; mGluR2; GRM3; GPRC1C; MGLUR3; Metabotropic glutamate receptor 3; mGluR3
Gene ID	2912
SwissProt ID	Q14416

Application

Dilution Ratio	WB: 1/500-1/1000 IHC: 1/50-1/100
Molecular Weight	Calculated MW: 96 kDa; Observed MW: 99 kDa

**Product Name: Metabotropic Glutamate Receptor 2
Rabbit Monoclonal Antibody
Catalog #: AMRe02249**



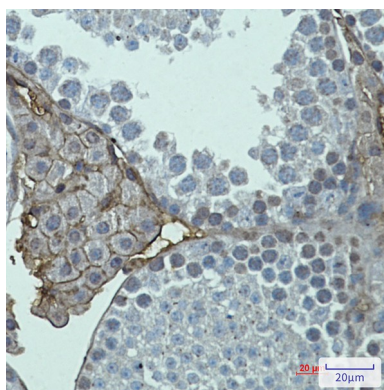
Background

G-protein coupled receptor for glutamate. Ligand binding causes a conformation change that triggers signaling via guanine nucleotide-binding proteins (G proteins) and modulates the activity of down-stream effectors, such as adenylate cyclase. Signaling inhibits adenylate cyclase activity. May mediate suppression of neurotransmission or may be involved in synaptogenesis or synaptic stabilization.

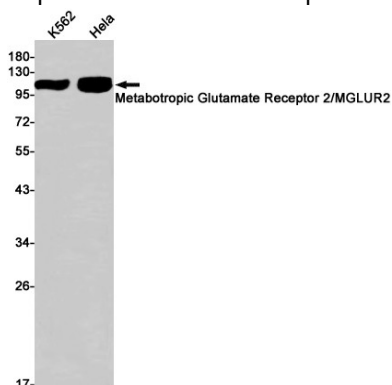
Research Area

Neuroscience

Image Data



Immunohistochemistry analysis of paraffin-embedded mouse testis using Metabotropic Glutamate Receptor 2 antibody. High-pressure and temperature Sodium Citrate pH 6.0 was used for antigen retrieval.



Western blot analysis of Metabotropic Glutamate Receptor 2 in K562, HeLa lysates using Metabotropic Glutamate Receptor 2 antibody.

Note

For research use only.

**Product Name: Metabotropic Glutamate Receptor 2
Rabbit Monoclonal Antibody
Catalog #: AMRe02249**

