

Summary

Production Name	MCM7 Rabbit Monoclonal Antibody
Description	Recombinant Rabbit Monoclonal antibody
Host	Rabbit
Application	WB,IHC-P,IP
Reactivity	Human,Mouse,Rat

Performance

Conjugation	Unconjugated
Modification	Unmodified
Isotype	IgG
Clonality	Monoclonal Antibody
Form	Liquid
Storage	Store at 4°C short term. Aliquot and store at -20°C long term. Avoid freeze/thaw cycles.
Buffer	50mM Tris-Glycine(pH 7.4), 0.15M NaCl, 40% Glycerol, 0.01% Sodium azide and 0.05% BSA
Purification	Affinity Purified

Immunogen

Gene Name	MCM7
Alternative Names	MCM7; CDC47; MCM2; DNA replication licensing factor MCM7; CDC47 homolog; P1.1-MCM3
Gene ID	4176
SwissProt ID	P33993

Application

Dilution Ratio	WB: 1/500-1/1000 IHC: 1/50-1/100 IP: 1/20
Molecular Weight	Calculated MW: 81 kDa; Observed MW: 81 kDa

Product Name: MCM7 Rabbit Monoclonal Antibody
Catalog #: AMRe02235



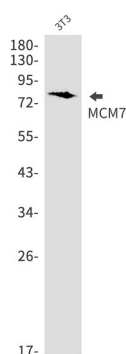
Background

Acts as component of the MCM2-7 complex (MCM complex) which is the putative replicative helicase essential for 'once per cell cycle' DNA replication initiation and elongation in eukaryotic cells. The active ATPase sites in the MCM2-7 ring are formed through the interaction surfaces of two neighboring subunits such that a critical structure of a conserved arginine finger motif is provided in trans relative to the ATP-binding site of the Walker A box of the adjacent subunit.

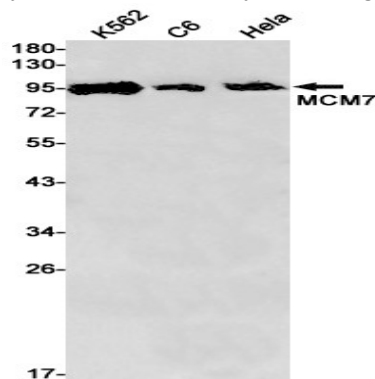
Research Area

Epigenetics and Nuclear Signaling

Image Data

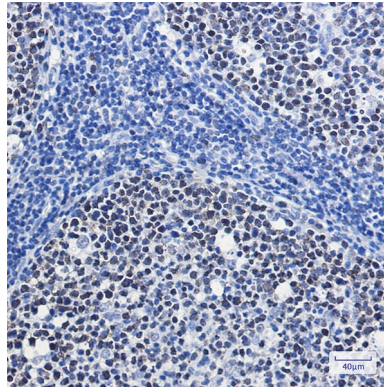


Western blot analysis of MCM7 in 3T3 lysates using MCM7 antibody.



Western blot analysis of MCM7 in K562, C6, HeLa lysates using MCM7 antibody.

Product Name: MCM7 Rabbit Monoclonal Antibody
Catalog #: AMRe02235



Immunohistochemistry analysis of paraffin-embedded Human tonsil using MCM7 antibody. High-pressure and temperature Sodium Citrate pH 6.0 was used for antigen retrieval.

Note

For research use only.