

**Product Name: Phospho-MCM2 (Ser108) Rabbit
Monoclonal Antibody
Catalog #: AMRe02233**

Summary

Production Name	Phospho-MCM2 (Ser108) Rabbit Monoclonal Antibody
Description	Recombinant Rabbit Monoclonal antibody
Host	Rabbit
Application	WB,ICC/IF,IP
Reactivity	Human,Mouse,Rat

Performance

Conjugation	Unconjugated
Modification	Phosphorylated
Isotype	IgG
Clonality	Monoclonal Antibody
Form	Liquid
Storage	Store at 4°C short term. Aliquot and store at -20°C long term. Avoid freeze/thaw cycles.
Buffer	50mM Tris-Glycine(pH 7.4), 0.15M NaCl, 40% Glycerol, 0.01% Sodium azide and 0.05% BSA
Purification	Affinity Purified

Immunogen

Gene Name	MCM2
Alternative Names	MCM2; BM28; CCNL1; CDCL1; KIAA0030; DNA replication licensing factor MCM2; Minichromosome maintenance protein 2 homolog; Nuclear protein BM28
Gene ID	4171
SwissProt ID	P49736

Application

Dilution Ratio	WB: 1/500-1/1000 IF: 1/50-1/200 IP: 1/20
Molecular Weight	Calculated MW: 102 kDa; Observed MW: 125 kDa

Product Name: Phospho-MCM2 (Ser108) Rabbit Monoclonal Antibody
Catalog #: AMRe02233

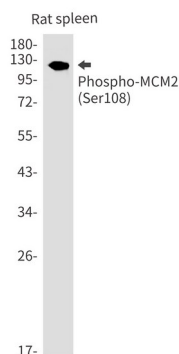
Background

The protein encoded by this gene is one of the highly conserved mini-chromosome maintenance proteins (MCM) that are involved in the initiation of eukaryotic genome replication. The hexameric protein complex formed by MCM proteins is a key component of the pre-replication complex (pre_RC) and may be involved in the formation of replication forks and in the recruitment of other DNA replication related proteins. This protein forms a complex with MCM4, 6, and 7, and has been shown to regulate the helicase activity of the complex. This protein is phosphorylated, and thus regulated by, protein kinases CDC2 and CDC7. Multiple alternatively spliced transcript variants have been found, but the full-length nature of some variants has not been defined. [provided by RefSeq, Oct 2012]

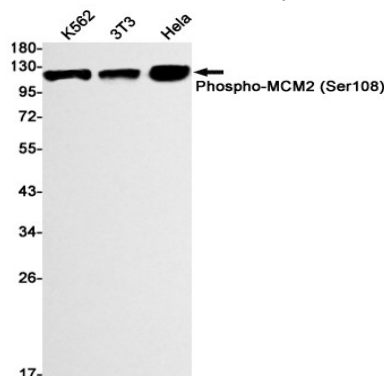
Research Area

Epigenetics and Nuclear Signaling

Image Data

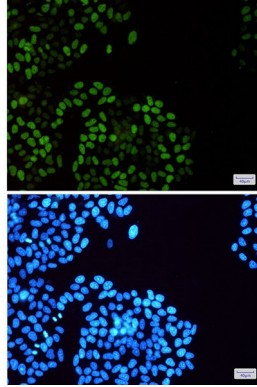


Western blot analysis of Phospho-MCM2 (Ser108) in rat spleen lysates using Phospho-MCM2 (Ser108) antibody.



Western blot analysis of Phospho-MCM2 (Ser108) in K562, 3T3, HeLa lysates using Phospho-MCM2 (Ser108) antibody.

**Product Name: Phospho-MCM2 (Ser108) Rabbit
Monoclonal Antibody
Catalog #: AMRe02233**



Immunocytochemistry analysis of MCM2 (Phospho-Ser108)(green) in HeLa using MCM2 (Phospho-Ser108) antibody, and DAPI(blue)

Note

For research use only.