

## Summary

<b>Production Name</b>	LC3A Rabbit Monoclonal Antibody
<b>Description</b>	Recombinant Rabbit Monoclonal antibody
<b>Host</b>	Rabbit
<b>Application</b>	WB,IHC-P,IP
<b>Reactivity</b>	Human,Mouse,Rat

## Performance

<b>Conjugation</b>	Unconjugated
<b>Modification</b>	Unmodified
<b>Isotype</b>	IgG
<b>Clonality</b>	Monoclonal Antibody
<b>Form</b>	Liquid
<b>Storage</b>	Store at 4°C short term. Aliquot and store at -20°C long term. Avoid freeze/thaw cycles.
<b>Buffer</b>	50mM Tris-Glycine(pH 7.4), 0.15M NaCl, 40% Glycerol, 0.01% Sodium azide and 0.05% BSA
<b>Purification</b>	Affinity Purified

## Immunogen

<b>Gene Name</b>	MAP1LC3A
<b>Alternative Names</b>	Microtubule-associated proteins 1A/1B light chain 3A; Autophagy-related protein LC3 A; Autophagy-related ubiquitin-like modifier LC3 A; MAP1 light chain 3-like protein 1; MAP1A/MAP1B light chain 3 A; MAP1A/MAP1B LC3 A; Microtubule-associated protein 1 light chain 3 alpha
<b>Gene ID</b>	84557
<b>SwissProt ID</b>	Q9H492

## Application

<b>Dilution Ratio</b>	WB: 1/500-1/1000 IHC: 1/50-1/100 IP: 1/20
<b>Molecular Weight</b>	Calculated MW: 14 kDa; Observed MW: 14,16 kDa

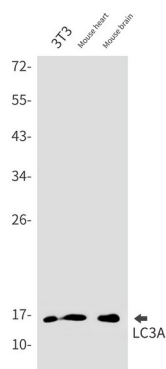
## Background

Autophagy marker Light Chain 3 (LC3) was originally identified as a subunit of microtubule-associated proteins 1A and 1B (termed MAP1LC3), and subsequently found to contain similarity to the yeast protein Apg8/Aut7/Cvt5 critical for autophagy. Three human LC3 isoforms (LC3A, LC3B, and LC3C) undergo post-translational modifications during autophagy. Cleavage of LC3 at the carboxy terminus immediately following synthesis yields the cytosolic LC3-I form.

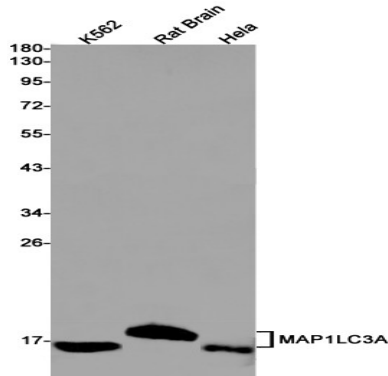
## Research Area

Signal Transduction

## Image Data

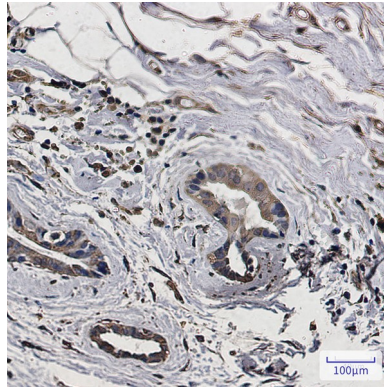


Western blot analysis of LC3A in 3T3, mouse heart, mouse brain lysates using LC3A antibody.



Western blot analysis of LC3A in K562, rat Brain, HeLa lysates using LC3A antibody.

**Product Name: LC3A Rabbit Monoclonal Antibody**  
**Catalog #: AMRe02228**



Immunohistochemistry analysis of paraffin-embedded Human breast cancer using LC3A antibody. High-pressure and temperature Sodium Citrate pH 6.0 was used for antigen retrieval.

**Note**

For research use only.