

**Product Name: LXR alpha Rabbit Monoclonal Antibody**  
**Catalog #: AMRe02223**



---

## Summary

<b>Production Name</b>	LXR alpha Rabbit Monoclonal Antibody
<b>Description</b>	Recombinant Rabbit Monoclonal antibody
<b>Host</b>	Rabbit
<b>Application</b>	WB,IHC-P
<b>Reactivity</b>	Human,Rat

## Performance

<b>Conjugation</b>	Unconjugated
<b>Modification</b>	Unmodified
<b>Isotype</b>	IgG
<b>Clonality</b>	Monoclonal Antibody
<b>Form</b>	Liquid
<b>Storage</b>	Store at 4°C short term. Aliquot and store at -20°C long term. Avoid freeze/thaw cycles.
<b>Buffer</b>	50mM Tris-Glycine(pH 7.4), 0.15M NaCl, 40% Glycerol, 0.01% Sodium azide and 0.05% BSA
<b>Purification</b>	Affinity Purified

## Immunogen

<b>Gene Name</b>	NR1H3
<b>Alternative Names</b>	NR1H3; LXRA; Oxysterols receptor LXR-alpha; Liver X receptor alpha; Nuclear receptor subfamily 1 group H member 3
<b>Gene ID</b>	10062
<b>SwissProt ID</b>	Q13133

## Application

<b>Dilution Ratio</b>	WB: 1/500-1/1000 IHC: 1/50-1/100
<b>Molecular Weight</b>	Calculated MW: 50 kDa; Observed MW: 50 kDa

**Product Name: LXR alpha Rabbit Monoclonal Antibody**  
**Catalog #: AMRe02223**



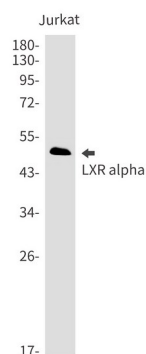
## Background

Orphan receptor. Interaction with RXR shifts RXR from its role as a silent DNA-binding partner to an active ligand-binding subunit in mediating retinoid responses through target genes defined by LXRES. LXRES are DR4-type response elements characterized by direct repeats of two similar hexanuclotide half-sites spaced by four nucleotides. Plays an important role in the regulation of cholesterol homeostasis, regulating cholesterol uptake through MYLIP-dependent ubiquitination of LDLR, VLDLR and LRP8.

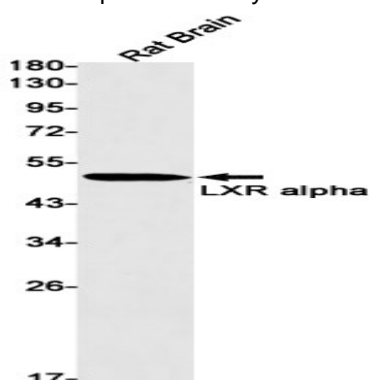
## Research Area

Cardiovascular

## Image Data

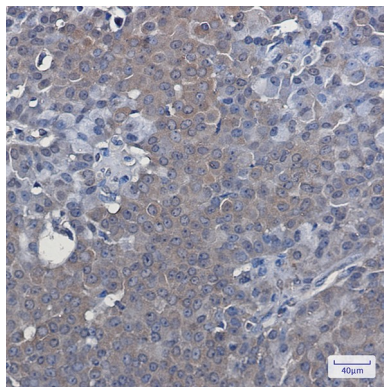


Western blot analysis of LXR alpha in Jurkat lysates using LXR alpha antibody.



Western blot analysis of LXR alpha in rat Brain lysates using LXR alpha antibody.

**Product Name: LXR alpha Rabbit Monoclonal Antibody**  
**Catalog #: AMRe02223**



Immunohistochemistry analysis of paraffin-embedded Human breast cancer using LXR alpha antibody. High-pressure and temperature Sodium Citrate pH 6.0 was used for antigen retrieval.

**Note**

For research use only.