

Summary

Production Name	Lumican Rabbit Monoclonal Antibody
Description	Recombinant Rabbit Monoclonal antibody
Host	Rabbit
Application	WB,IHC-F,IHC-P,ICC/IF
Reactivity	Human,Mouse,Rat

Performance

Conjugation	Unconjugated
Modification	Unmodified
Isotype	IgG
Clonality	Monoclonal Antibody
Form	Liquid
Storage	Store at 4°C short term. Aliquot and store at -20°C long term. Avoid freeze/thaw cycles.
Buffer	50mM Tris-Glycine(pH 7.4), 0.15M NaCl, 40% Glycerol, 0.01% Sodium azide and 0.05% BSA
Purification	Affinity Purified

Immunogen

Gene Name	LUM
Alternative Names	LDC; LUM; Lumican; SLRR2D
Gene ID	4060
SwissProt ID	P51884

Application

Dilution Ratio	WB: 1/500-1/1000 IHC: 1/50-1/100 IF: 1/50-1/200
Molecular Weight	Calculated MW: 38 kDa; Observed MW: 60 kDa

Background

Product Name: Lumican Rabbit Monoclonal Antibody
Catalog #: AMRe02222

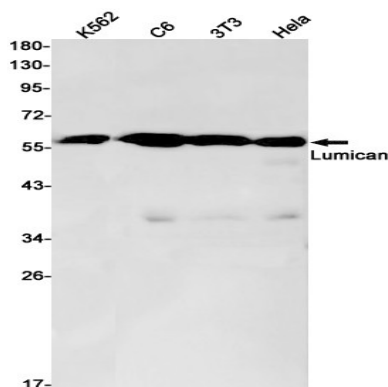


Belongs to the small leucine-rich proteoglycan (SLRP) family. SLRP class II subfamily. Contains 11 LRR (leucine-rich) repeats. Contains 1 LRRNT domain.

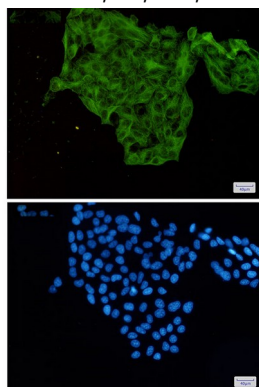
Research Area

Cancer

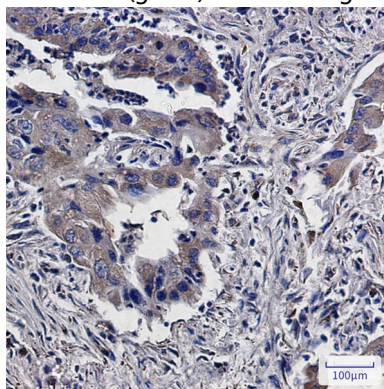
Image Data



Western blot analysis of Lumican in K562, C6, 3T3, HeLa lysates using Lumican antibody.



Immunocytochemistry analysis of Lumican(green) in HeLa using Lumican antibody, and DAPI(blue)



Immunohistochemistry analysis of paraffin-embedded Human lung cancer using Lumican antibody. High-pressure and temperature Sodium Citrate pH 6.0 was used for antigen retrieval.

Product Name: Lumican Rabbit Monoclonal Antibody
Catalog #: AMRe02222



Note

For research use only.