

Summary

| | |
|------------------------|--|
| Production Name | LRG1 Rabbit Monoclonal Antibody |
| Description | Recombinant Rabbit Monoclonal antibody |
| Host | Rabbit |
| Application | WB,IHC-P,IP |
| Reactivity | Human |

Performance

| | |
|---------------------|--|
| Conjugation | Unconjugated |
| Modification | Unmodified |
| Isotype | IgG |
| Clonality | Monoclonal Antibody |
| Form | Liquid |
| Storage | Store at 4°C short term. Aliquot and store at -20°C long term. Avoid freeze/thaw cycles. |
| Buffer | 50mM Tris-Glycine(pH 7.4), 0.15M NaCl, 40% Glycerol, 0.01% Sodium azide and 0.05% BSA |
| Purification | Affinity Purified |

Immunogen

| | |
|--------------------------|---|
| Gene Name | LRG1 |
| Alternative Names | LRG1; LRG; Leucine-rich alpha-2-glycoprotein; LRG |
| Gene ID | 116844 |
| SwissProt ID | P02750 |

Application

| | |
|-------------------------|--|
| Dilution Ratio | WB: 1/500-1/1000 IHC: 1/50-1/100 IP: 1/20 |
| Molecular Weight | Calculated MW: 38 kDa; Observed MW: 48 kDa |

Background

Product Name: LRG1 Rabbit Monoclonal Antibody
Catalog #: AMRe02220

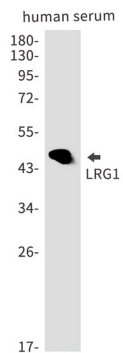


Transforming growth factor beta receptor binding.

Research Area

Immunology

Image Data



Western blot analysis of LRG1 in Human serum lysates using LRG1 antibody.

Note

For research use only.