

## Summary

<b>Production Name</b>	Lck Rabbit Monoclonal Antibody
<b>Description</b>	Recombinant Rabbit Monoclonal antibody
<b>Host</b>	Rabbit
<b>Application</b>	WB,IHC-F,IHC-P,ICC/IF,IP
<b>Reactivity</b>	Human,Rat

## Performance

<b>Conjugation</b>	Unconjugated
<b>Modification</b>	Unmodified
<b>Isotype</b>	IgG
<b>Clonality</b>	Monoclonal Antibody
<b>Form</b>	Liquid
<b>Storage</b>	Store at 4°C short term. Aliquot and store at -20°C long term. Avoid freeze/thaw cycles.
<b>Buffer</b>	50mM Tris-Glycine(pH 7.4), 0.15M NaCl, 40% Glycerol, 0.01% Sodium azide and 0.05% BSA
<b>Purification</b>	Affinity Purified

## Immunogen

<b>Gene Name</b>	LCK LCK; Tyrosine-protein kinase Lck; Leukocyte C-terminal Src kinase; LSK; Lymphocyte cell-specific protein-tyrosine kinase; Protein YT16; Proto-oncogene Lck; T cell-specific protein-tyrosine kinase; p56-LCK
<b>Alternative Names</b>	
<b>Gene ID</b>	3932
<b>SwissProt ID</b>	P06239

## Application

<b>Dilution Ratio</b>	WB: 1/500-1/1000 IHC: 1/50-1/100 IF: 1/50-1/200 IP: 1/20
<b>Molecular Weight</b>	Calculated MW: 58 kDa; Observed MW: 58 kDa

**Product Name: Lck Rabbit Monoclonal Antibody**  
**Catalog #: AMRe02208**



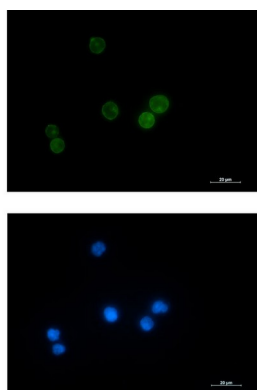
## Background

The Src family of protein tyrosine kinases, which includes Src, Lyn, Fyn, Yes, Lck, Blk, and Hck, are important in the regulation of growth and differentiation of eukaryotic cells. Src activity is regulated by tyrosine phosphorylation at two sites, but with opposing effects.

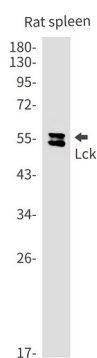
## Research Area

Immunology

## Image Data

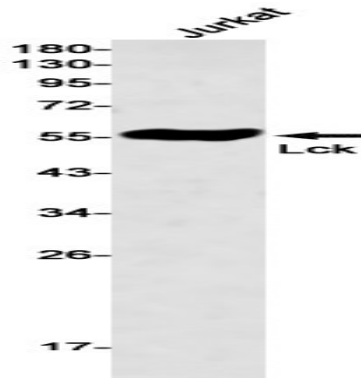


Immunocytochemistry analysis of Lck (green) in Jurkat using Lck antibody, and DAPI (blue).

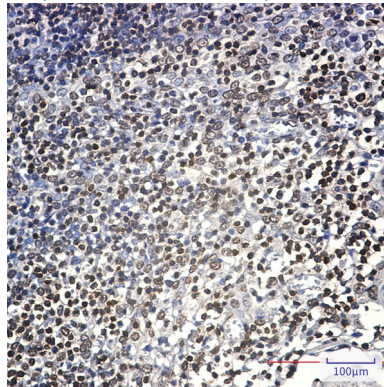


Western blot analysis of Lck in rat spleen lysates using Lck antibody.

**Product Name: Lck Rabbit Monoclonal Antibody**  
**Catalog #: AMRe02208**



Western blot analysis of Lck in Jurkat lysates using Lck antibody



Immunohistochemistry analysis of paraffin-embedded Human tonsil using Lck antibody. High-pressure and temperature Sodium Citrate pH 6.0 was used for antigen retrieval.

## **Note**

For research use only.