

Summary

Production Name	LAMP1 Rabbit Monoclonal Antibody
Description	Recombinant Rabbit Monoclonal antibody
Host	Rabbit
Application	WB,IHC-P
Reactivity	Human

Performance

Conjugation	Unconjugated
Modification	Unmodified
Isotype	IgG
Clonality	Monoclonal Antibody
Form	Liquid
Storage	Store at 4°C short term. Aliquot and store at -20°C long term. Avoid freeze/thaw cycles.
Buffer	50mM Tris-Glycine(pH 7.4), 0.15M NaCl, 40% Glycerol, 0.01% Sodium azide and 0.05% BSA
Purification	Affinity Purified

Immunogen

Gene Name	LAMP1
Alternative Names	LAMP1; Lysosome-associated membrane glycoprotein 1; LAMP-1; Lysosome-associated membrane protein 1; CD107 antigen-like family member A; CD107a
Gene ID	3916
SwissProt ID	P11279

Application

Dilution Ratio	WB: 1/500-1/1000 IHC: 1/50-1/100
Molecular Weight	Calculated MW: 45 kDa; Observed MW: 90-120 kDa

Product Name: LAMP1 Rabbit Monoclonal Antibody
Catalog #: AMRe02205



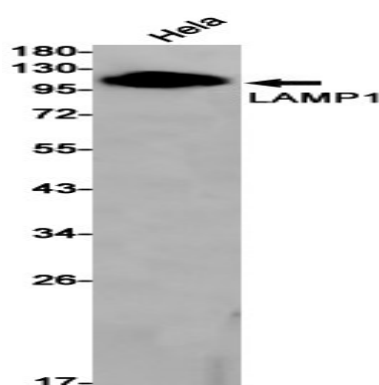
Background

LAMP1 and LAMP2 (lysosome-associated membrane protein 1 and 2) are two abundant lysosomal membrane proteins. Both are transmembrane proteins and heavily glycosylated at the amino-terminal luminal side of the lysosomal inner leaflet, which protects the proteins from proteolysis. The carboxy terminus of LAMP1 is exposed to the cytoplasm and contains a tyrosine sorting motif which targets LAMP to lysosomal membranes.

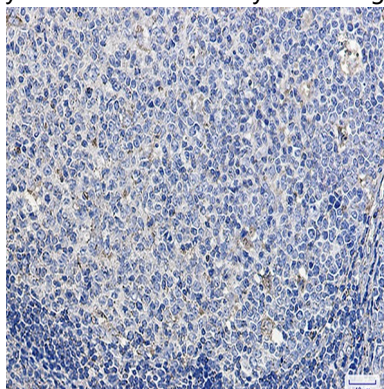
Research Area

Neuroscience

Image Data



Western blot analysis of LAMP1 in HeLa lysates using LAMP1 antibody.



Immunohistochemistry analysis of paraffin-embedded Human tonsil using LAMP1 antibody. High-pressure and temperature Sodium Citrate pH 6.0 was used for antigen retrieval.

Note

For research use only.