
Summary

Production Name	Lamin B2 Rabbit Monoclonal Antibody
Description	Recombinant Rabbit Monoclonal antibody
Host	Rabbit
Application	WB,IHC-F,IHC-P,ICC/IF,IP
Reactivity	Human,Mouse,Rat

Performance

Conjugation	Unconjugated
Modification	Unmodified
Isotype	IgG
Clonality	Monoclonal Antibody
Form	Liquid
Storage	Store at 4°C short term. Aliquot and store at -20°C long term. Avoid freeze/thaw cycles.
Buffer	50mM Tris-Glycine(pH 7.4), 0.15M NaCl, 40% Glycerol, 0.01% Sodium azide and 0.05% BSA
Purification	Affinity Purified

Immunogen

Gene Name	LMNB2
Alternative Names	LMN2; LAMB2
Gene ID	84823
SwissProt ID	Q03252

Application

Dilution Ratio	WB: 1/500-1/1000 IHC: 1/50-1/100 IF: 1/50-1/200 IP: 1/20
Molecular Weight	Calculated MW: 70 kDa; Observed MW: 70 kDa

Background

Product Name: Lamin B2 Rabbit Monoclonal Antibody
Catalog #: AMRe02203

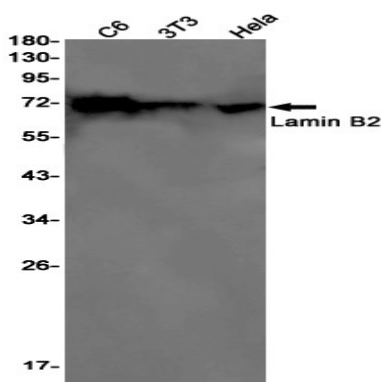


Lamins are components of the nuclear lamina, a fibrous layer on the nucleoplasmic side of the inner nuclear membrane, which is thought to provide a framework for the nuclear envelope and may also interact with chromatin.

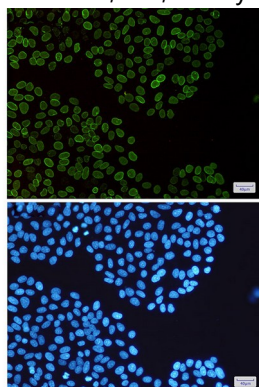
Research Area

Cell Biology

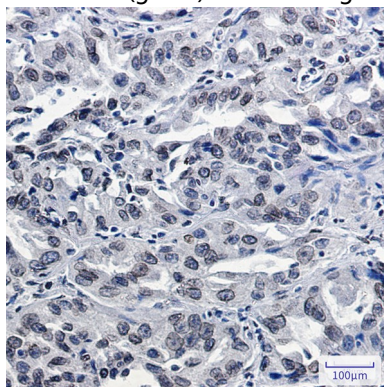
Image Data



Western blot analysis of Lamin B2 in C6, 3T3, HeLa lysates using Lamin B2 antibody.



Immunocytochemistry analysis of Lamin B2 (green) in HeLa using Lamin B2 antibody, and DAPI (blue)



Immunohistochemistry analysis of paraffin-embedded Human lung cancer using Lamin B2 antibody. High-pressure and temperature Sodium Citrate pH 6.0 was used for antigen retrieval.

Product Name: Lamin B2 Rabbit Monoclonal Antibody
Catalog #: AMRe02203



Note

For research use only.