

Product Name: Lamin B Receptor Rabbit Monoclonal Antibody
Catalog #: AMRe02201



Summary

Production Name	Lamin B Receptor Rabbit Monoclonal Antibody
Description	Recombinant Rabbit Monoclonal antibody
Host	Rabbit
Application	WB,IHC-P,IP
Reactivity	Human

Performance

Conjugation	Unconjugated
Modification	Unmodified
Isotype	IgG
Clonality	Monoclonal Antibody
Form	Liquid
Storage	Store at 4°C short term. Aliquot and store at -20°C long term. Avoid freeze/thaw cycles.
Buffer	50mM Tris-Glycine(pH 7.4), 0.15M NaCl, 40% Glycerol, 0.01% Sodium azide and 0.05% BSA
Purification	Affinity Purified

Immunogen

Gene Name	LBR
Alternative Names	PHA; LMN2R; TDRD18; DHCR14B; LBR
Gene ID	3930
SwissProt ID	Q14739

Application

Dilution Ratio	WB: 1/500-1/1000 IHC: 1/50-1/100 IP: 1/20
Molecular Weight	Calculated MW: 71 kDa; Observed MW: 71 kDa

Product Name: Lamin B Receptor Rabbit Monoclonal Antibody
Catalog #: AMRe02201

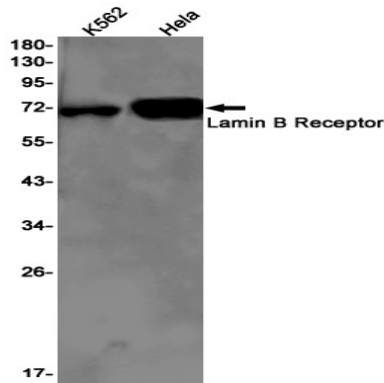
Background

The protein encoded by this gene belongs to the ERG4/ERG24 family. It localized in the nuclear envelope inner membrane and anchors the lamina and the heterochromatin to the membrane. It may mediate interaction between chromatin and lamin B. Mutations of this gene has been associated with autosomal recessive HEM/Greenberg skeletal dysplasia. Alternative splicing occurs at this locus and two transcript variants encoding the same protein have been identified.

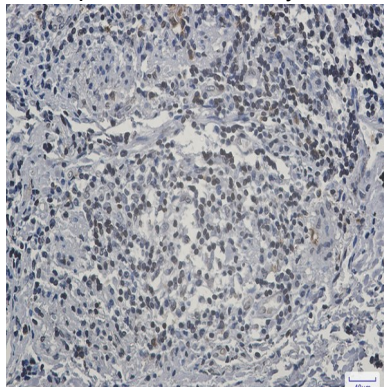
Research Area

Tags & Cell Markers

Image Data



Western blot analysis of Lamin B Receptor in K562, HeLa lysates using Lamin B Receptor antibody.



Immunohistochemistry analysis of paraffin-embedded Human lung cancer using Lamin B Receptor antibody. High-pressure and temperature Sodium Citrate pH 6.0 was used for antigen retrieval.

Note

For research use only.