

## Summary

<b>Production Name</b>	KDM4B Rabbit Monoclonal Antibody
<b>Description</b>	Recombinant Rabbit Monoclonal antibody
<b>Host</b>	Rabbit
<b>Application</b>	WB,IHC-F,IHC-P,ICC/IF
<b>Reactivity</b>	Human

## Performance

<b>Conjugation</b>	Unconjugated
<b>Modification</b>	Unmodified
<b>Isotype</b>	IgG
<b>Clonality</b>	Monoclonal Antibody
<b>Form</b>	Liquid
<b>Storage</b>	Store at 4°C short term. Aliquot and store at -20°C long term. Avoid freeze/thaw cycles.
<b>Buffer</b>	50mM Tris-Glycine(pH 7.4), 0.15M NaCl, 40% Glycerol, 0.01% Sodium azide and 0.05% BSA
<b>Purification</b>	Affinity Purified

## Immunogen

<b>Gene Name</b>	KDM4B
<b>Alternative Names</b>	KDM4B; JHDM3B; JMJD2B; KIAA0876; Lysine-specific demethylase 4B; JmjC domain-containing histone demethylation protein 3B; Jumonji domain-containing protein 2B
<b>Gene ID</b>	23030
<b>SwissProt ID</b>	O94953

## Application

<b>Dilution Ratio</b>	WB: 1/500-1/1000 IHC: 1/50-1/100 IF: 1/50-1/200
<b>Molecular Weight</b>	Calculated MW: 122 kDa; Observed MW: 150 kDa

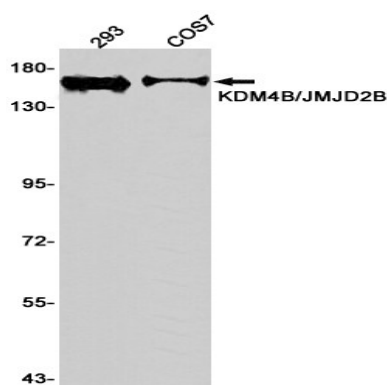
## Background

Histone demethylase that specifically demethylates 'Lys-9' of histone H3, thereby playing a role in histone code. Does not demethylate histone H3 'Lys-4', H3 'Lys-27', H3 'Lys-36' nor H4 'Lys-20'. Only able to demethylate trimethylated H3 'Lys-9', with a weaker activity than KDM4A, KDM4C and KDM4D. Demethylation of Lys residue generates formaldehyde and succinate.

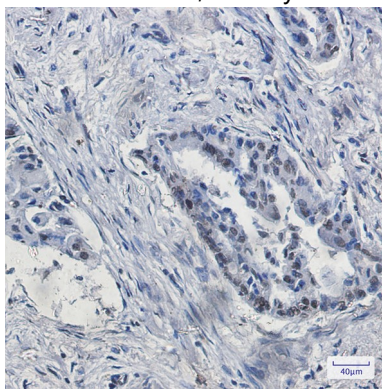
## Research Area

Epigenetics and Nuclear Signaling

## Image Data

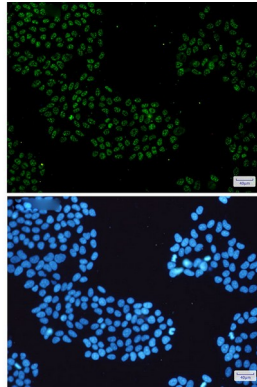


Western blot analysis of KDM4B in 293, COS7 lysates using KDM4B antibody.



Immunohistochemistry analysis of paraffin-embedded Human lung cancer using KDM4B/JMJD2B antibody. High-pressure and temperature Sodium Citrate pH 6.0 was used for antigen retrieval.

**Product Name: KDM4B Rabbit Monoclonal Antibody**  
**Catalog #: AMRe02191**



Immunocytochemistry analysis of KDM4B/JMJD2B(green) in HeLa using KDM4B/JMJD2B antibody,and DAPI(blue)

**Note**

For research use only.