
Summary

Production Name	KCTD21 Rabbit Monoclonal Antibody
Description	Recombinant Rabbit Monoclonal antibody
Host	Rabbit
Application	WB
Reactivity	Human,Mouse,Rat

Performance

Conjugation	Unconjugated
Modification	Unmodified
Isotype	IgG
Clonality	Monoclonal Antibody
Form	Liquid
Storage	Store at 4°C short term. Aliquot and store at -20°C long term. Avoid freeze/thaw cycles.
Buffer	50mM Tris-Glycine(pH 7.4), 0.15M NaCl, 40% Glycerol, 0.01% Sodium azide and 0.05% BSA
Purification	Affinity Purified

Immunogen

Gene Name	KCTD21
Alternative Names	KCASH2
Gene ID	283219
SwissProt ID	Q4G0X4

Application

Dilution Ratio	WB: 1/500-1/1000
Molecular Weight	Calculated MW: 30 kDa; Observed MW: 30 kDa

Background

Product Name: KCTD21 Rabbit Monoclonal Antibody
Catalog #: AMRe02187

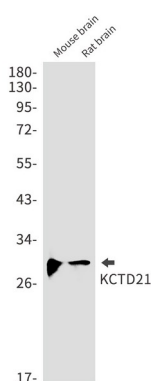


Probable substrate-specific adapter of a BCR (BTB-CUL3-RBX1) E3 ubiquitin-protein ligase complex mediating the ubiquitination and subsequent proteasomal degradation of target proteins. Promotes the ubiquitination of HDAC1. Can function as antagonist of the Hedgehog pathway by affecting the nuclear transfer of transcription factor GLI1; the function probably occurs via HDAC1 down-regulation, keeping GLI1 acetylated and inactive. Inhibits cell growth and tumorigenicity of medulloblastoma (MDB) (PubMed:21472142).

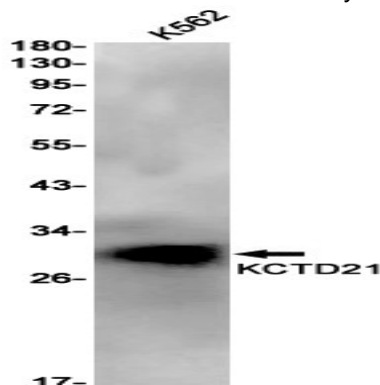
Research Area

Neuroscience

Image Data



Western blot analysis of KCTD21 in mouse brain, rat brain lysates using KCTD21 antibody.



Western blot analysis of KCTD21 in K562 lysates using KCTD21 antibody.

Note

For research use only.