

**Product Name: Ubiquitin K48 Rabbit Monoclonal Antibody**  
**Catalog #: AMRe02182**

---

## Summary

<b>Production Name</b>	Ubiquitin K48 Rabbit Monoclonal Antibody
<b>Description</b>	Recombinant Rabbit Monoclonal antibody
<b>Host</b>	Rabbit
<b>Application</b>	WB,IHC-F,IHC-P,ICC/IF
<b>Reactivity</b>	Human,Mouse,Rat

## Performance

<b>Conjugation</b>	Unconjugated
<b>Modification</b>	Unmodified
<b>Isotype</b>	IgG
<b>Clonality</b>	Monoclonal Antibody
<b>Form</b>	Liquid
<b>Storage</b>	Store at 4°C short term. Aliquot and store at -20°C long term. Avoid freeze/thaw cycles.
<b>Buffer</b>	50mM Tris-Glycine(pH 7.4), 0.15M NaCl, 40% Glycerol, 0.01% Sodium azide and 0.05% BSA
<b>Purification</b>	Affinity Purified

## Immunogen

<b>Gene Name</b>	UBB
<b>Alternative Names</b>	FLJ25987; MGC8385; ubiquitin B; Ubiquitin; UBCEP1; UBCEP2; RPS27A
<b>Gene ID</b>	7314
<b>SwissProt ID</b>	POCG47

## Application

<b>Dilution Ratio</b>	WB: 1/500-1/1000 IHC: 1/50-1/100 IF: 1/50-1/200
<b>Molecular Weight</b>	Refer to figures

**Product Name: Ubiquitin K48 Rabbit Monoclonal Antibody**  
**Catalog #: AMRe02182**

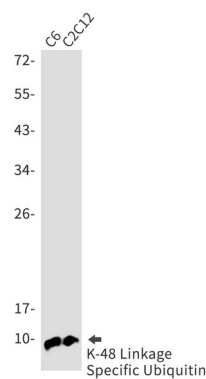
## Background

Plays an important role in the ubiquitin-proteasome pathway. Ubiquitin can be covalently linked to many cellular proteins by the ubiquitination process, which targets proteins for degradation by the 26S proteasome. Three components are involved in the target protein-ubiquitin conjugation process. Ubiquitin is first activated by forming a thiolester complex with the activation component E1; the activated ubiquitin is subsequently transferred to the ubiquitin-carrier protein E2, then from E2 to ubiquitin ligase E3 for final delivery to the epsilon-NH2 of the target protein lysine residue.

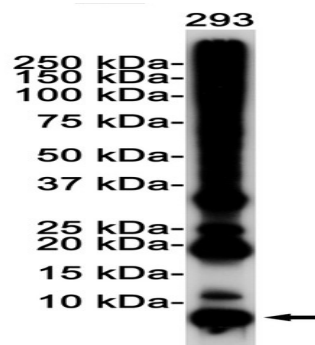
## Research Area

Neuroscience

## Image Data



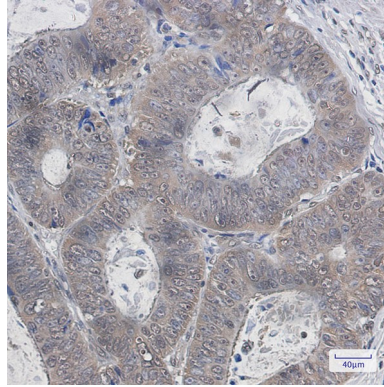
Western blot analysis of K48 Linkage Specific Ubiquitin in C6, C2C12 lysates using Ubiquitin K48 antibody.



Western blot analysis of K48 Linkage Specific Ubiquitin in 293 lysates using K48 Linkage Specific Ubiquitin antibody.

**Product Name: Ubiquitin K48 Rabbit Monoclonal Antibody**  
**Catalog #: AMRe02182**

---



Immunohistochemistry analysis of paraffin-embedded Human colon cancer using K48 Linkage Specific Ubiquitin antibody.  
High-pressure and temperature Sodium Citrate pH 6.0 was used for antigen retrieval.

**Note**

For research use only.