

**Product Name: Phospho-IRE1 (Ser724) Rabbit
Monoclonal Antibody
Catalog #: AMRe02170**

Summary

Production Name	Phospho-IRE1 (Ser724) Rabbit Monoclonal Antibody
Description	Recombinant Rabbit Monoclonal antibody
Host	Rabbit
Application	WB
Reactivity	Human

Performance

Conjugation	Unconjugated
Modification	Phosphorylated
Isotype	IgG
Clonality	Monoclonal Antibody
Form	Liquid
Storage	Store at 4°C short term. Aliquot and store at -20°C long term. Avoid freeze/thaw cycles.
Buffer	50mM Tris-Glycine(pH 7.4), 0.15M NaCl, 40% Glycerol, 0.01% Sodium azide and 0.05% BSA
Purification	Affinity Purified

Immunogen

Gene Name	ERN1
Alternative Names	ERN1; IRE1; Serine/threonine-protein kinase/endoribonuclease IRE1; Endoplasmic reticulum-to-nucleus signaling 1; Inositol-requiring protein 1; hIRE1p; Ire1-alpha; IRE1a
Gene ID	2081
SwissProt ID	O75460

Application

Dilution Ratio	WB: 1/500-1/1000
Molecular Weight	Calculated MW: 110 kDa; Observed MW: 110 kDa

**Product Name: Phospho-IRE1 (Ser724) Rabbit
Monoclonal Antibody
Catalog #: AMRe02170**

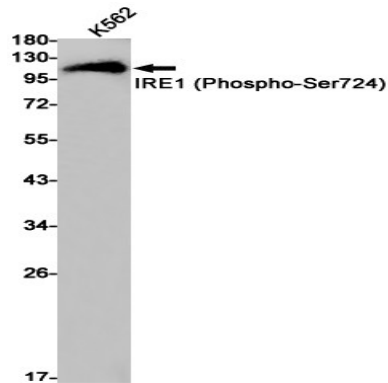
Background

Senses unfolded proteins in the lumen of the endoplasmic reticulum via its N-terminal domain which leads to enzyme auto-activation. The active endoribonuclease domain splices XBP1 mRNA to generate a new C-terminus, converting it into a potent unfolded-protein response transcriptional activator and triggering growth arrest and apoptosis.

Research Area

Signal Transduction

Image Data



Western blot analysis of IRE1 (Phospho-Ser724) in K562 lysates using Phospho-IRE1 (Ser724) antibody.

Note

For research use only.