

Product Name: Integrin Linked ILK Rabbit Monoclonal Antibody
Catalog #: AMRe02166



Summary

Production Name	Integrin Linked ILK Rabbit Monoclonal Antibody
Description	Recombinant Rabbit Monoclonal antibody
Host	Rabbit
Application	WB,IP
Reactivity	Human,Mouse,Rat

Performance

Conjugation	Unconjugated
Modification	Unmodified
Isotype	IgG
Clonality	Monoclonal Antibody
Form	Liquid
Storage	Store at 4°C short term. Aliquot and store at -20°C long term. Avoid freeze/thaw cycles.
Buffer	50mM Tris-Glycine(pH 7.4), 0.15M NaCl, 40% Glycerol, 0.01% Sodium azide and 0.05% BSA
Purification	Affinity Purified

Immunogen

Gene Name	ILK
Alternative Names	ILK; ILK1; ILK2; Integrin-linked protein kinase; 59 kDa serine/threonine-protein kinase; ILK-1; ILK-2; p59ILK
Gene ID	3611
SwissProt ID	Q13418

Application

Dilution Ratio	WB: 1/500-1/1000 IP: 1/20
Molecular Weight	Calculated MW: 51 kDa; Observed MW: 51 kDa

Product Name: Integrin Linked ILK Rabbit Monoclonal Antibody
Catalog #: AMRe02166



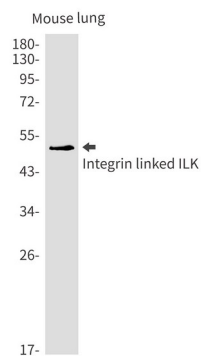
Background

Integrin-linked kinases (ILKs) couple integrins and growth factors to downstream pathways involved in cell survival, cell cycle control, cell-cell adhesion and cell motility. ILK functions as a scaffold bridging the extracellular matrix (ECM) and growth factor receptors to the actin cytoskeleton through interactions with integrin, PINCH (which links ILK to the RTKs via Nck2), CH-ILKBP and affixin.

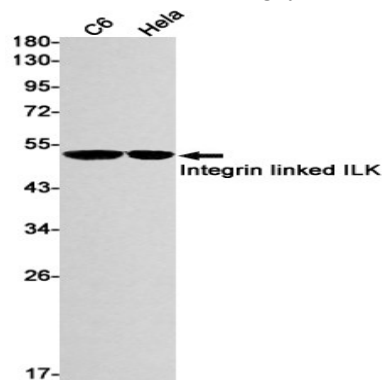
Research Area

Signal Transduction

Image Data



Western blot analysis of Integrin linked ILK in mouse lung lysates using Integrin Linked ILK antibody.



Western blot analysis of Integrin linked ILK in C6, HeLa lysates using Integrin linked ILK antibody.

Note

For research use only.